

# HAN UPRISING

We, the students that are crossed by the architecture that challenges hierarchical structures and the methods by which decisions are made, offer an alternative way of working with urban intervention and its perdure through time and space.

Hakim Bey's uprising ode on his book "TAZ" borrowed us the tools to resort non conformist designs subverting the imposed functionality of things. Existing subutilized infrastructure were hacked giving support to a peak community experience.



# CULTURAL DIMENSION OF WUHAN\_Gejiaying Road and Gejiaying Community expression

Located in China, the street is part of many others in the province of Hubei, city of Wuhan, called Han by local people. The identity is marked by strong historical-cultural elements and community participation.

With tactical urbanism and guerrilla architecture as a starting point, we are able to imagine solutions to the climate problem and reinforce the cultural strength of the community.



Folklore Festivals (民俗節日)

Paintings during Spring festival (Ming and Qing Dynasty)  
Unknow artist



Dragon boat race on the Yangtze River (龍舟比賽)



Street food (街頭食品)

Part of the Qingming Scroll (Song Dynasty)  
by Zhang Zedu-



Suoyi (蓑衣)

Chinese farmer's raincoat (1905)  
Unknown author



Shūfǎ (書法)

Bamboo and rock (1360-67)  
by Deng Yu



Hard wet mounting palm fiber brush (畫筆)

Wet mounting technique on Mulberry paper by Henry Li



# LAND USE MAP

## Land use

- Brownfield
- Commercial
- Construction
- Industrial
- Meadow
- Religious
- Residential
- Retail
- Public

## Natural

- Forest
- Water
- River
- Park
- Site
- Limit
- Unclassified



0 750 1.500 m

The extension of the street is attached to a historical and traditional heritage but isn't expressed on the constructions and its modern facades.

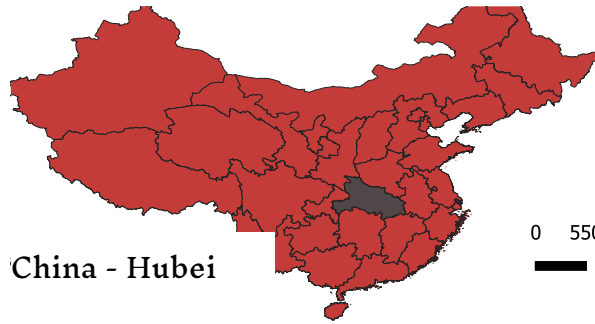
The 1 to 3 storey buildings are mainly commercial overlapped by residential types.



0 35 70 m

Wuhan -Gejiaying Community

- Blocks
- Jiangxia residence
- Public residence
- Former residence of Wang Ze
- Buildings
- Taipin mansion
- Former residence of Cai Guangji
- Site
- Chongzhen christian church
- Public green area



China - Hubei

0 550 km



Hubei - Wuhan

0 100 km



Wuhan -Gejiaying Community

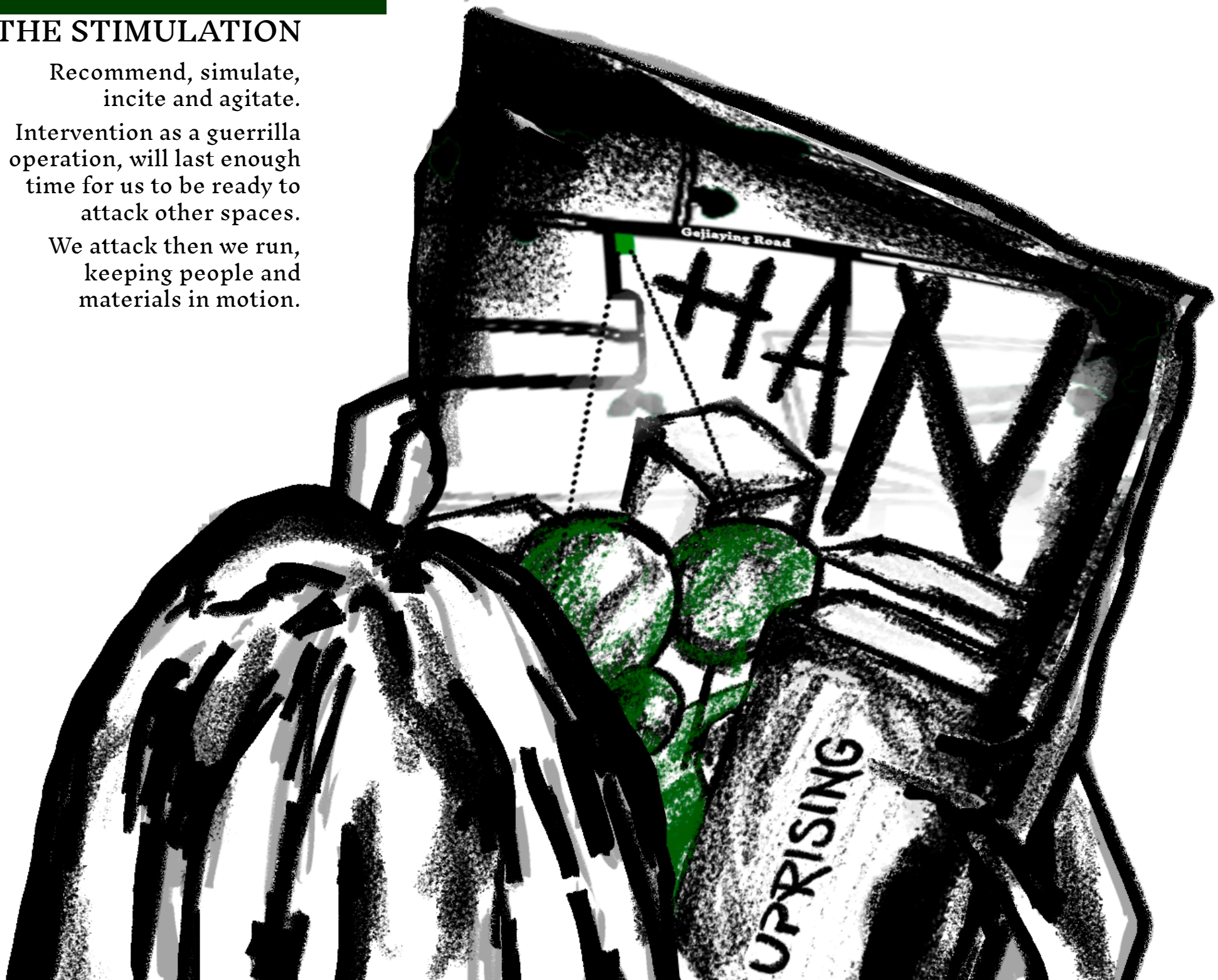
0 20 km

## THE STIMULATION

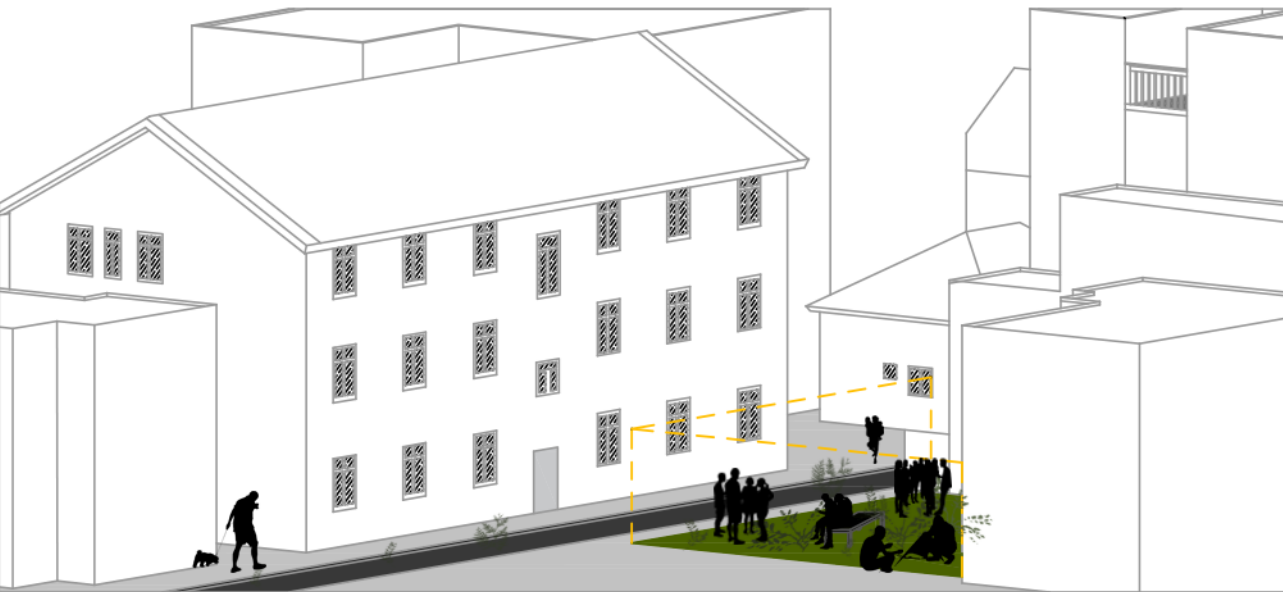
Recommend, simulate,  
incite and agitate.

Intervention as a guerrilla  
operation, will last enough  
time for us to be ready to  
attack other spaces.

We attack then we run,  
keeping people and  
materials in motion.



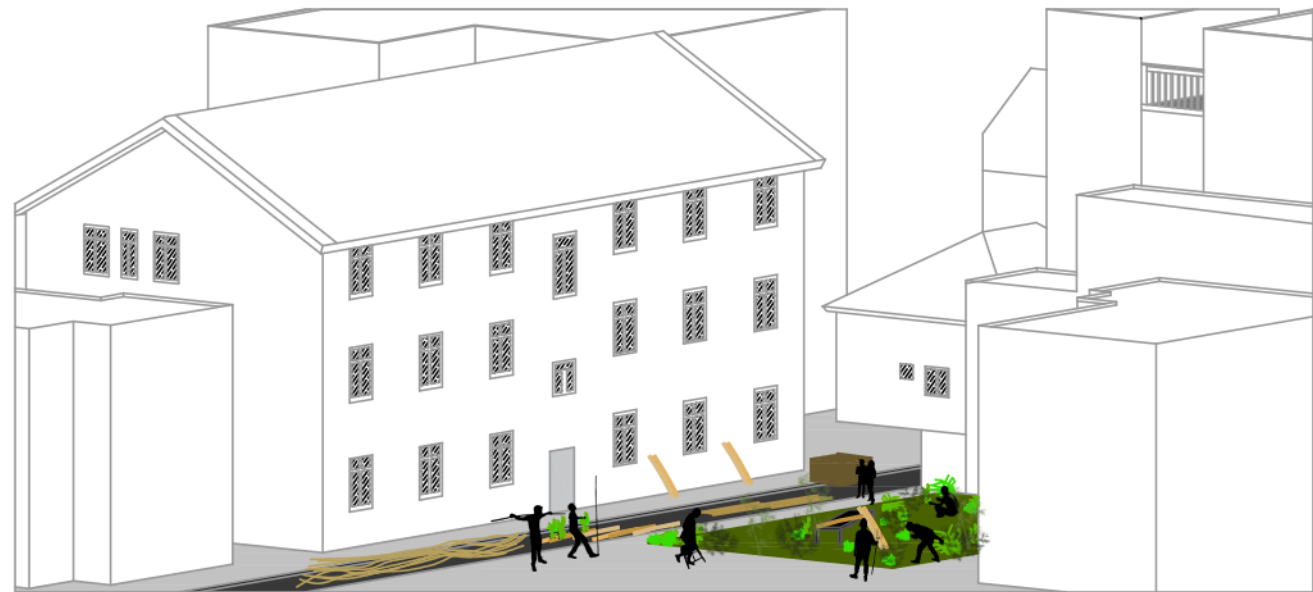
## THE FIRST GATHERING



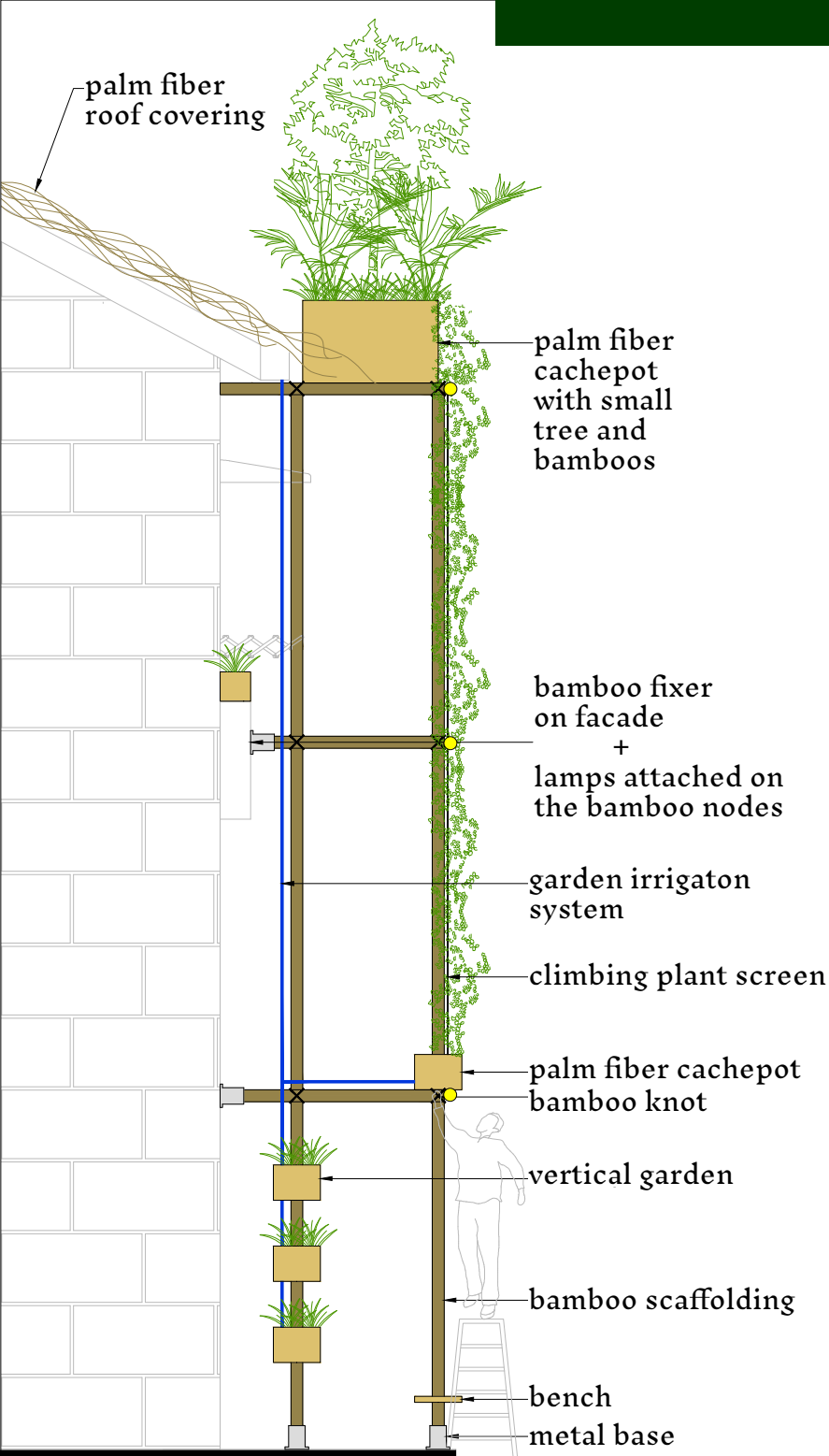
In this first meeting in the public garden on Gejiaying Street, we bring the community together to share experiences, discuss and plan improvements to be made on the street.

## THE SECOND GATHERING

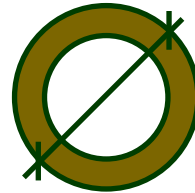
In a second meeting, we bring together local artisans, traders and other members of the community to begin working with traditional materials and crafts: bamboo, palm fiber, native vegetation and arts and crafts artifacts.



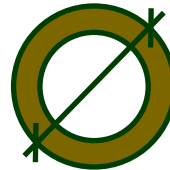
# THE THIRD GATHERING



## Bamboo cross-section



15cm  
Mosso Bamboo



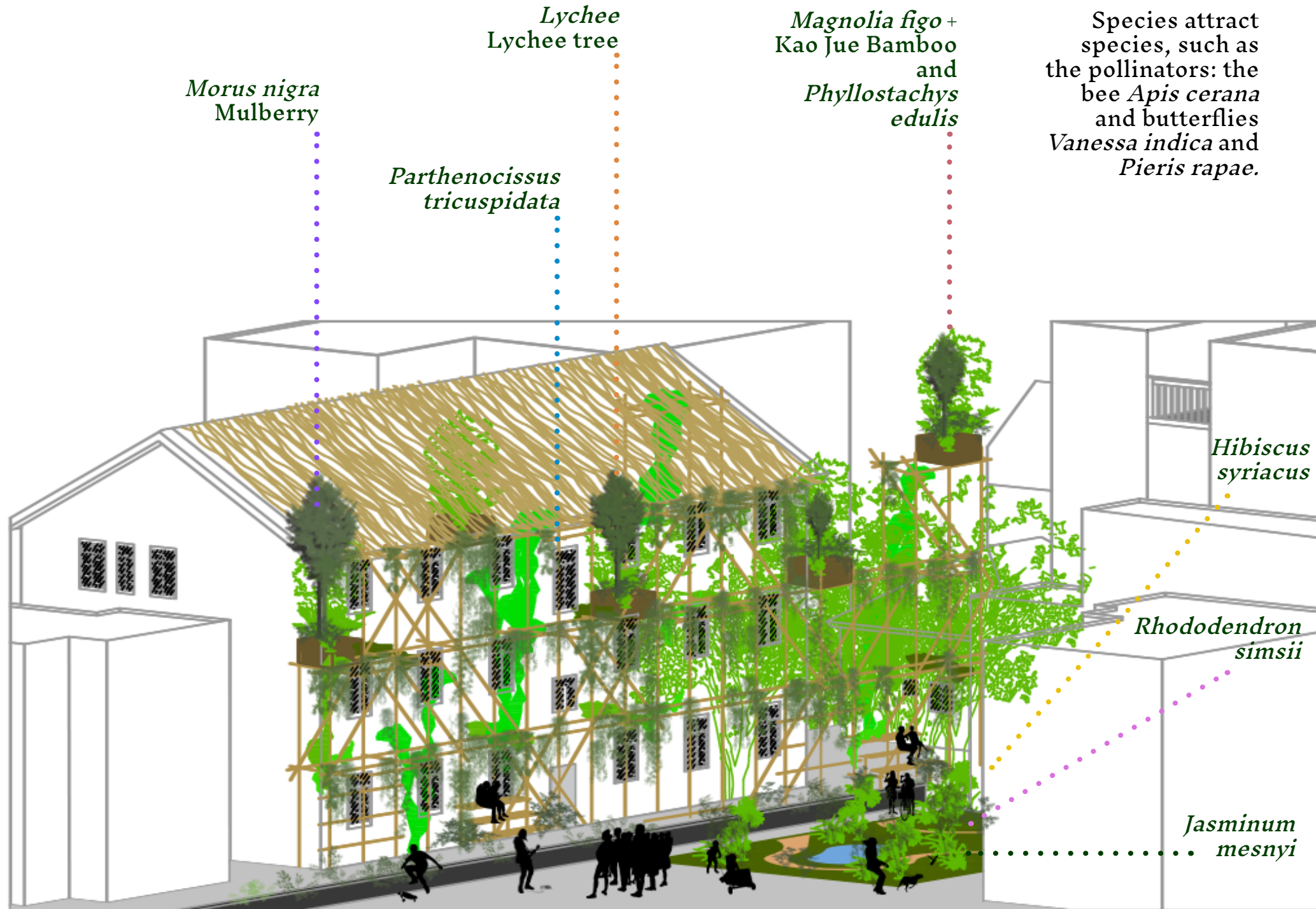
10cm  
Kao Jue

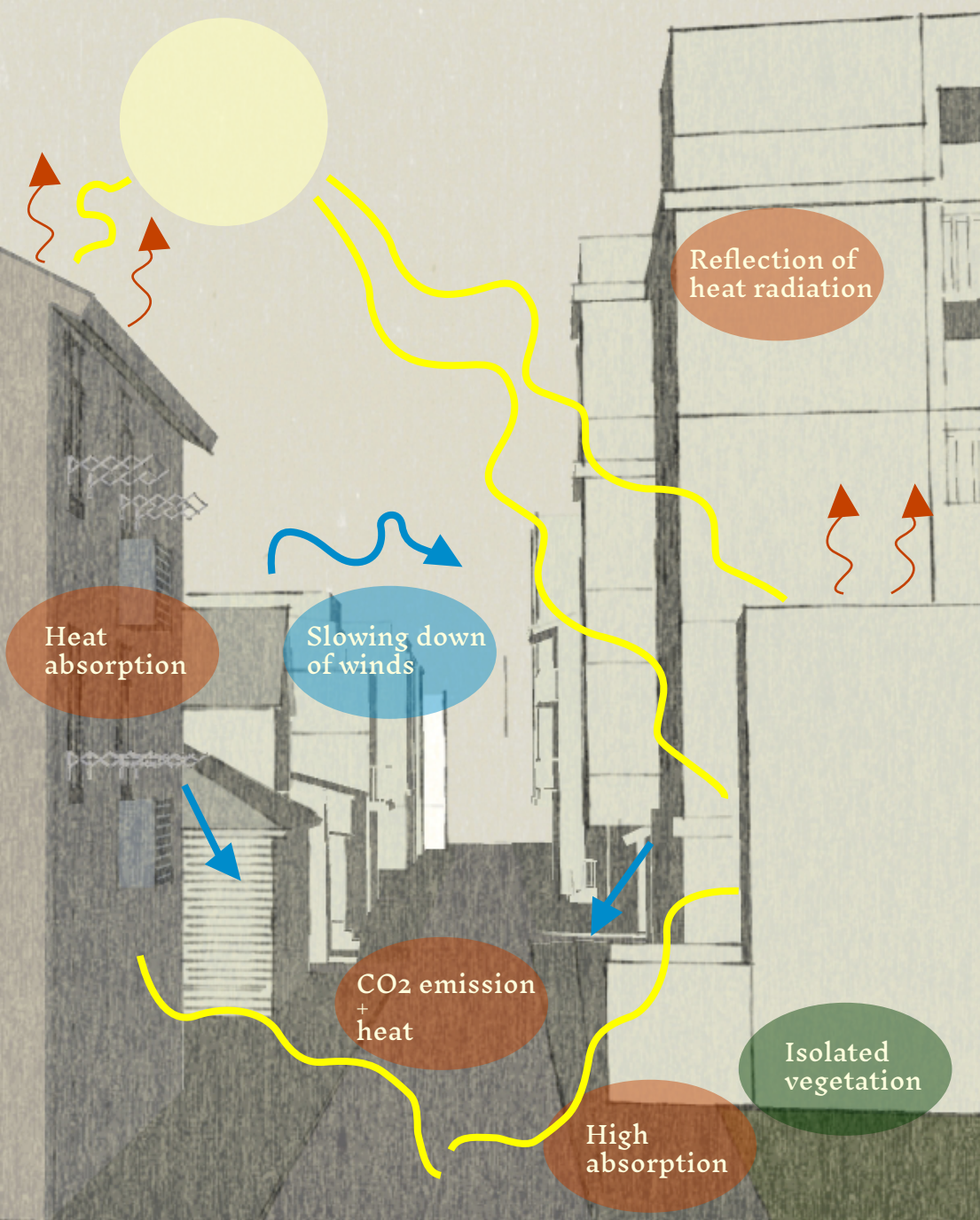
The third and final meeting marks the celebration of the construction of the proposal: an extensive bamboo scaffolding that houses vegetation and serves as support for various activities present on the street today.

Furthermore, the public garden was transformed into a small forest, to mitigate the heat island and function as, not only a decompression space, but also as a preventive medicine known as *şim-lim jowk* or forest bathing.

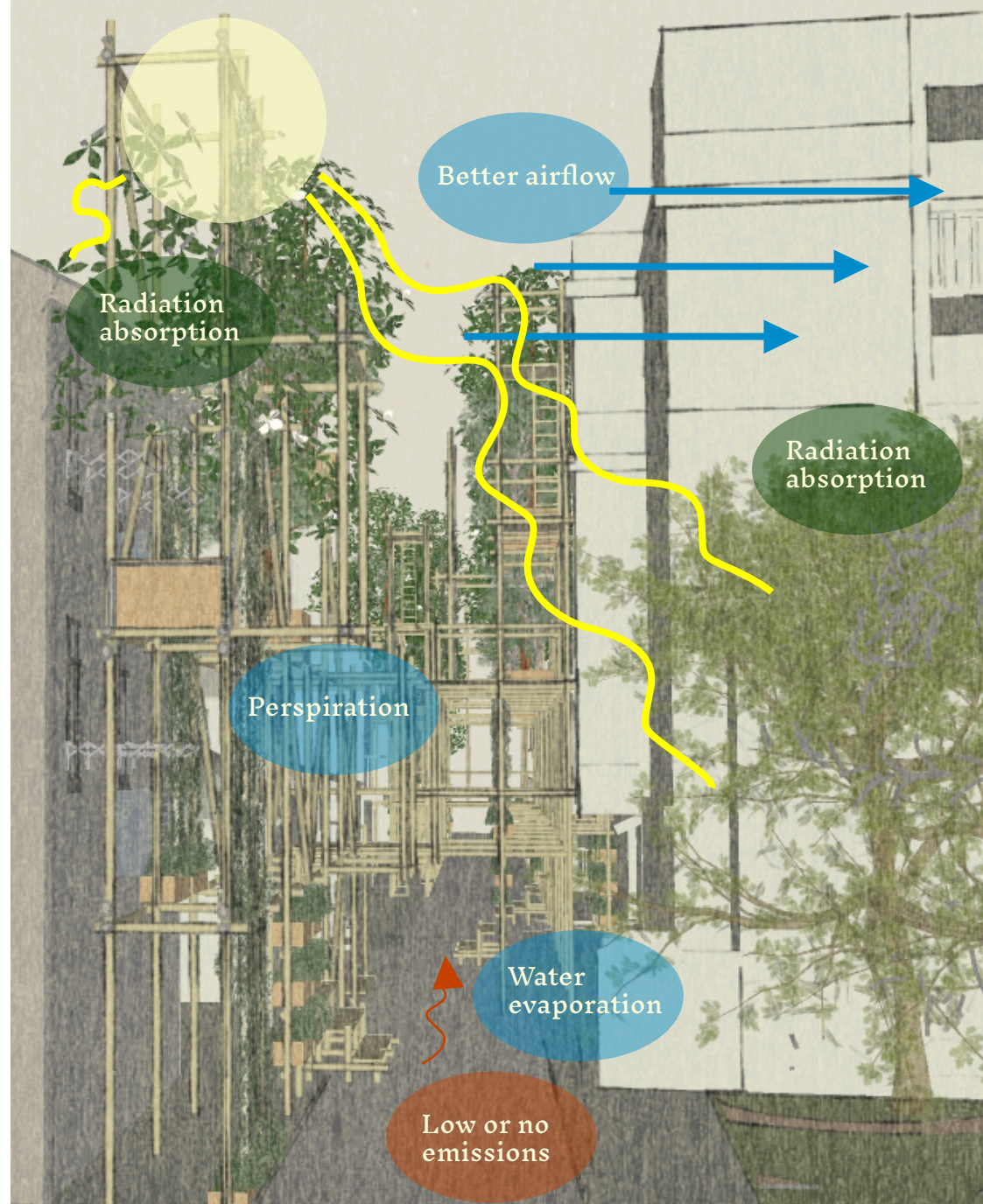


# THE MATURING PROCESS





36,4°C



The modern gray and sterile facades, impermeable soil, lack of vegetation and exposed roofs aggravate the heat island phenomenon. Exposed surfaces that absorb and reflect solar radiation increase internal and external temperatures. At night, the radiation absorbed by surfaces is lost as heat.





h

a

n

