

MONTREAL CITY

Multicultural
Multicolored



Canada on world map



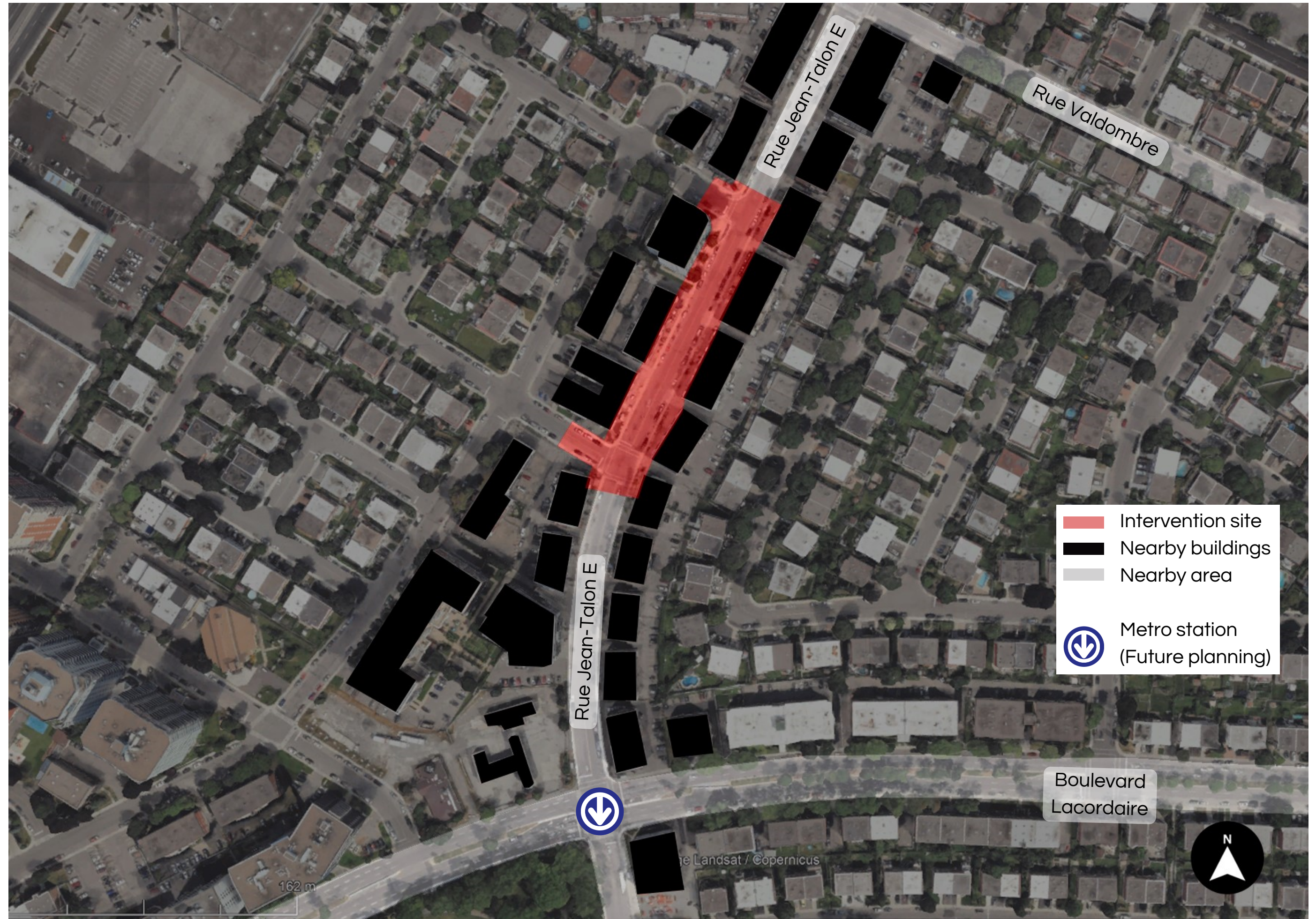
Location of Quebec



Location of Montreal



Montreal is the center of a metropolitan region known as Greater Montreal, which extends over a radius of approximately 40 km from the city. It has a population of about 1.8 million citizens.



GENERALITIES OF MONTREAL

Canada is a young country and immigrants make up 21% of its population, meaning that one in five people was born abroad. Most immigrants come from Asia

Canada is a diverse, tolerant, peaceful and welcoming nation, known for its nature and stunning natural beauty. It is a vast and varied country, a place worth knowing for its adventures and sophisticated culture. Canada's multicultural and vibrant cities contrast with the pristine nature that surrounds them



Most important cities

The largest city in Canada is Toronto, Ontario; followed by Vancouver, British Columbia; Montreal, Quebec; and Calgary, Alberta.

Population

Canada's population is 36 million, concentrated along the border with the United States. It is a sparsely inhabited country, with only four people per square kilometer.

Multiculturalism and ethnic diversity is one of the main characteristics of Canada's society and traditions.

The country is the result of a mixture of more than 200 different ethnic origins.

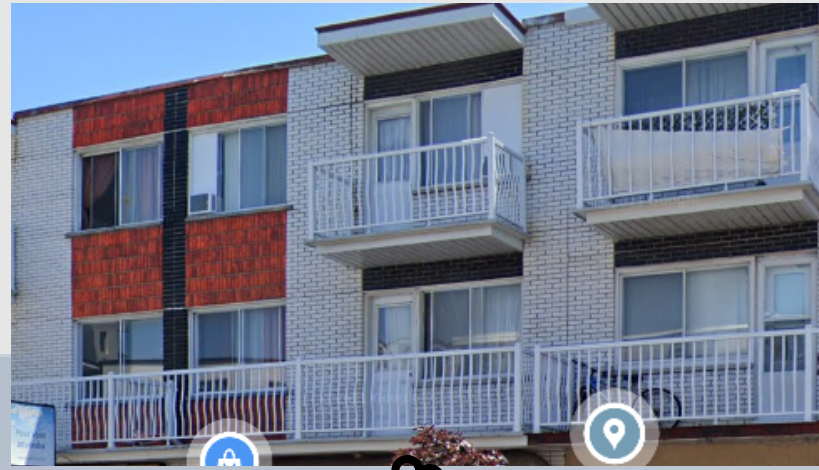
SITE ANALYSIS



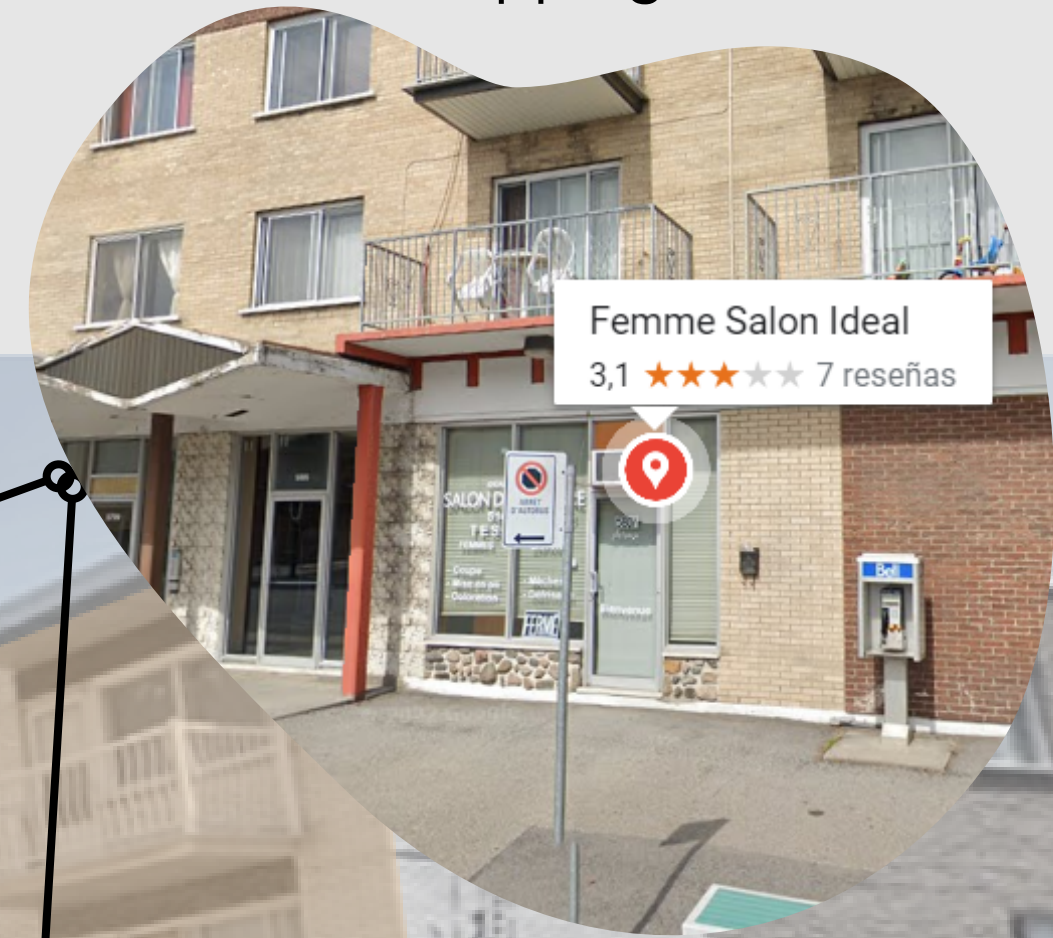
Parking, loading and unloading area



bus stop



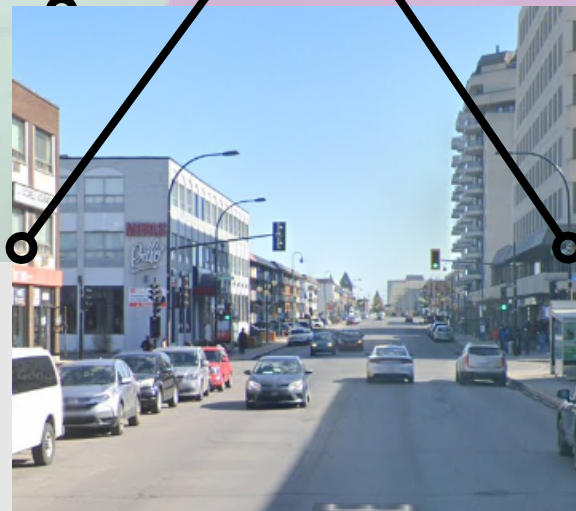
residential house



shopping area



sidewalk



central road lanes



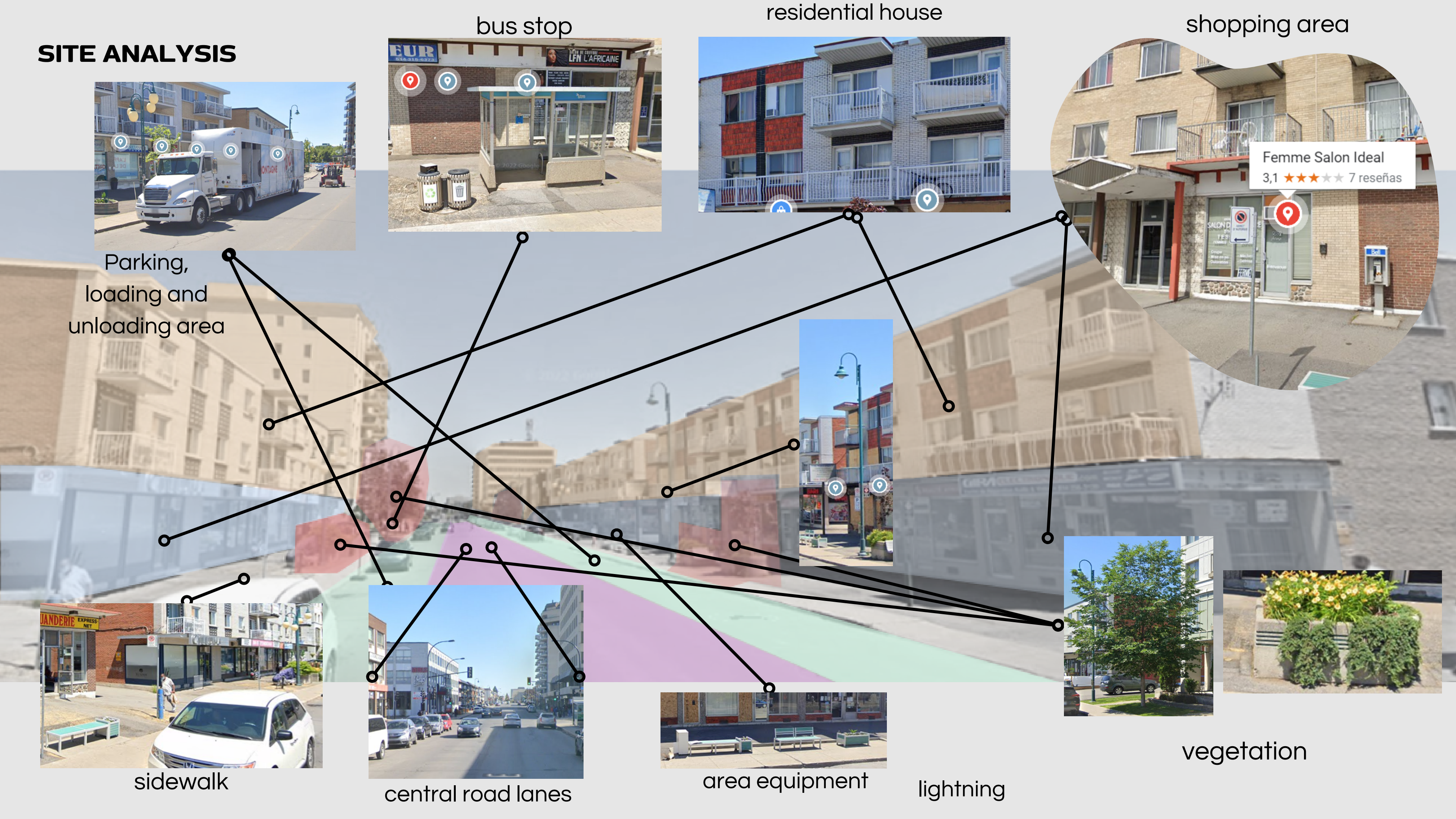
area equipment



lightning

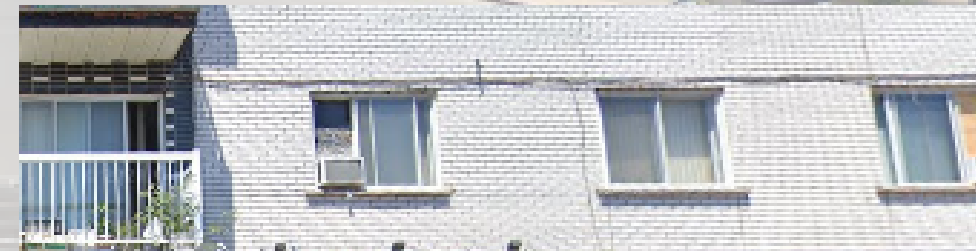
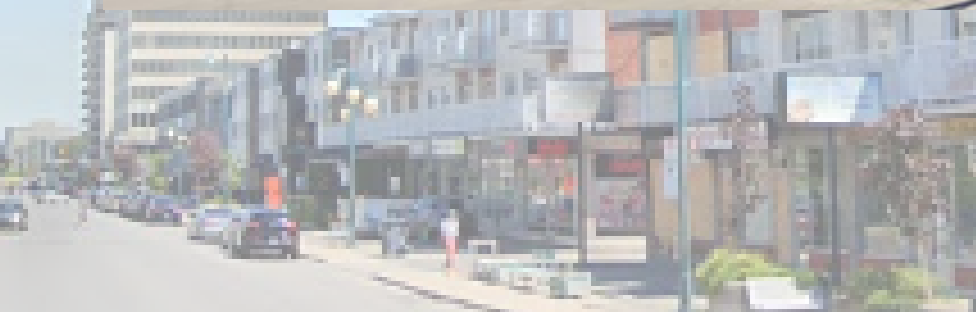


vegetation



PROBLEM OF THE PLACE

- Shortage of urban furniture
- Lack or no vegetation
- Lack of cycle path
- Invasion of public roads
- Shaded area requirement



DESIGN STRATEGIES

Design criteria: Mobility organization



Comfortable and safe crosswalks

- We shorten the distance pedestrians travel when crossing the street.

Universal accessibility

- We shorten the distance pedestrians travel when crossing the street.

Cycling structure

- We added a cycle route that connects to the current route.

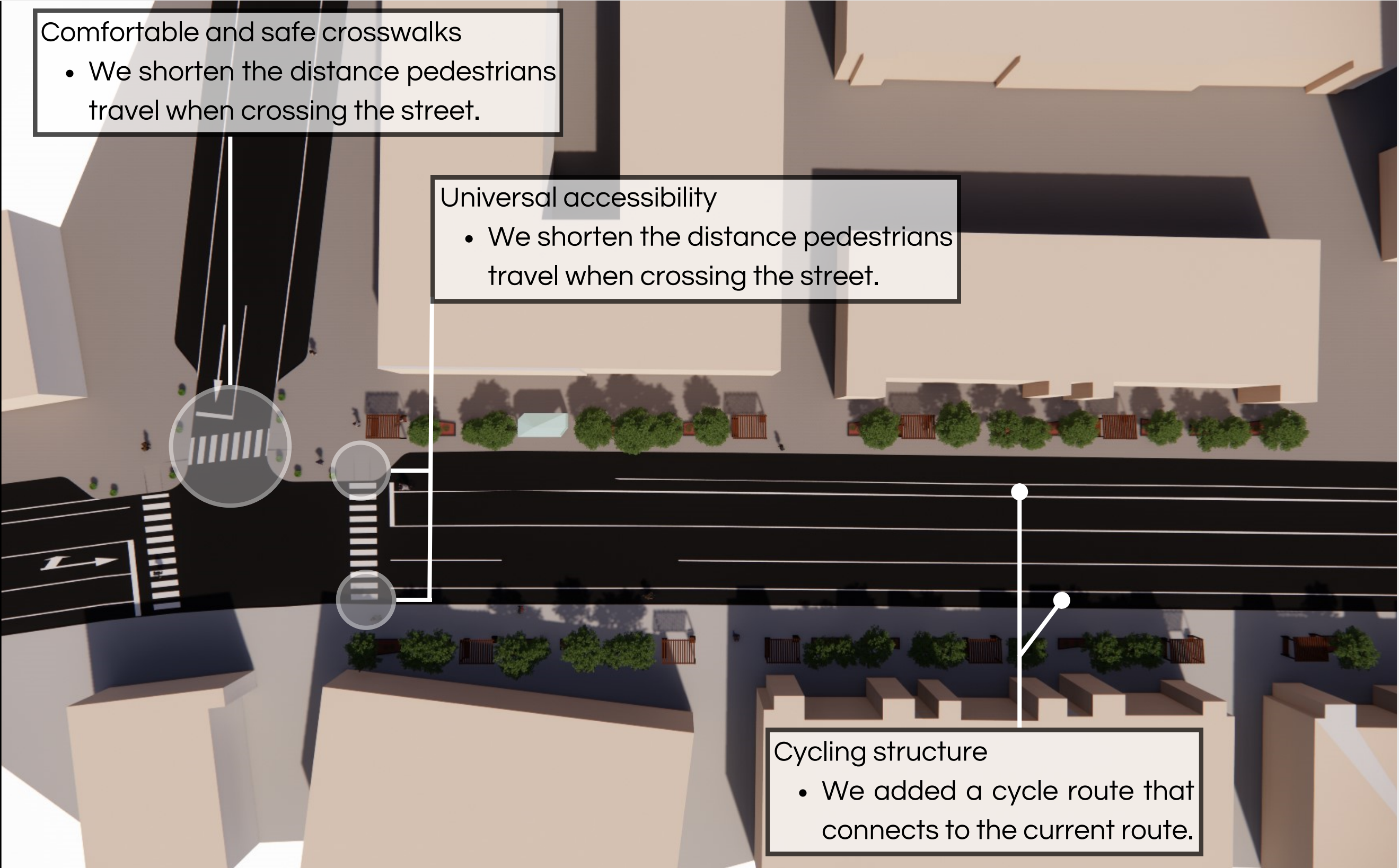


Crosswalks

- We added a zebra crossing and bays for pedestrian crossings.

Cycling structure

- We added a cycle route that connects to the current route.



DESIGN STRATEGIES

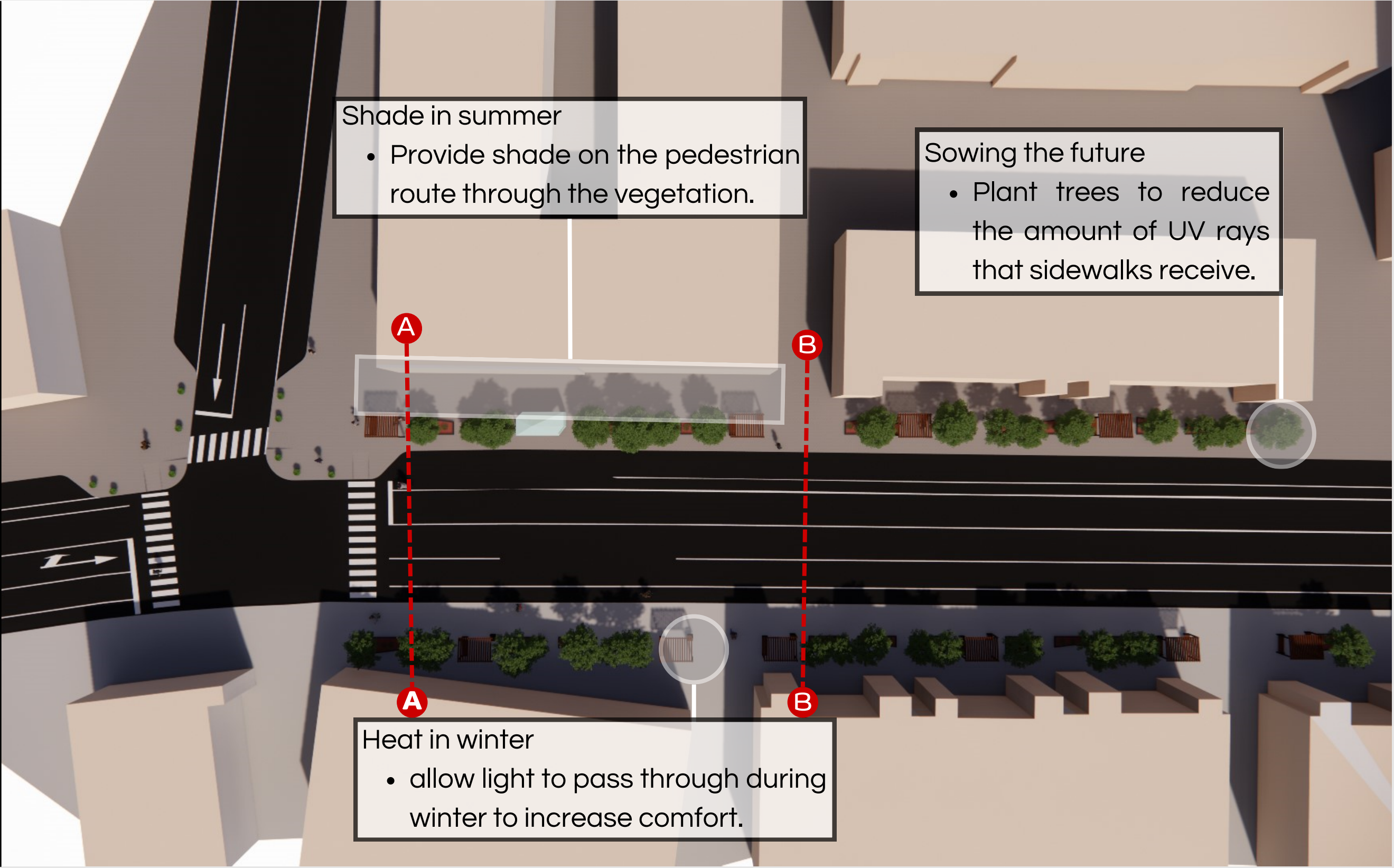
Design criteria: Heat Island effect



Shadows provided by natural elements and furniture.



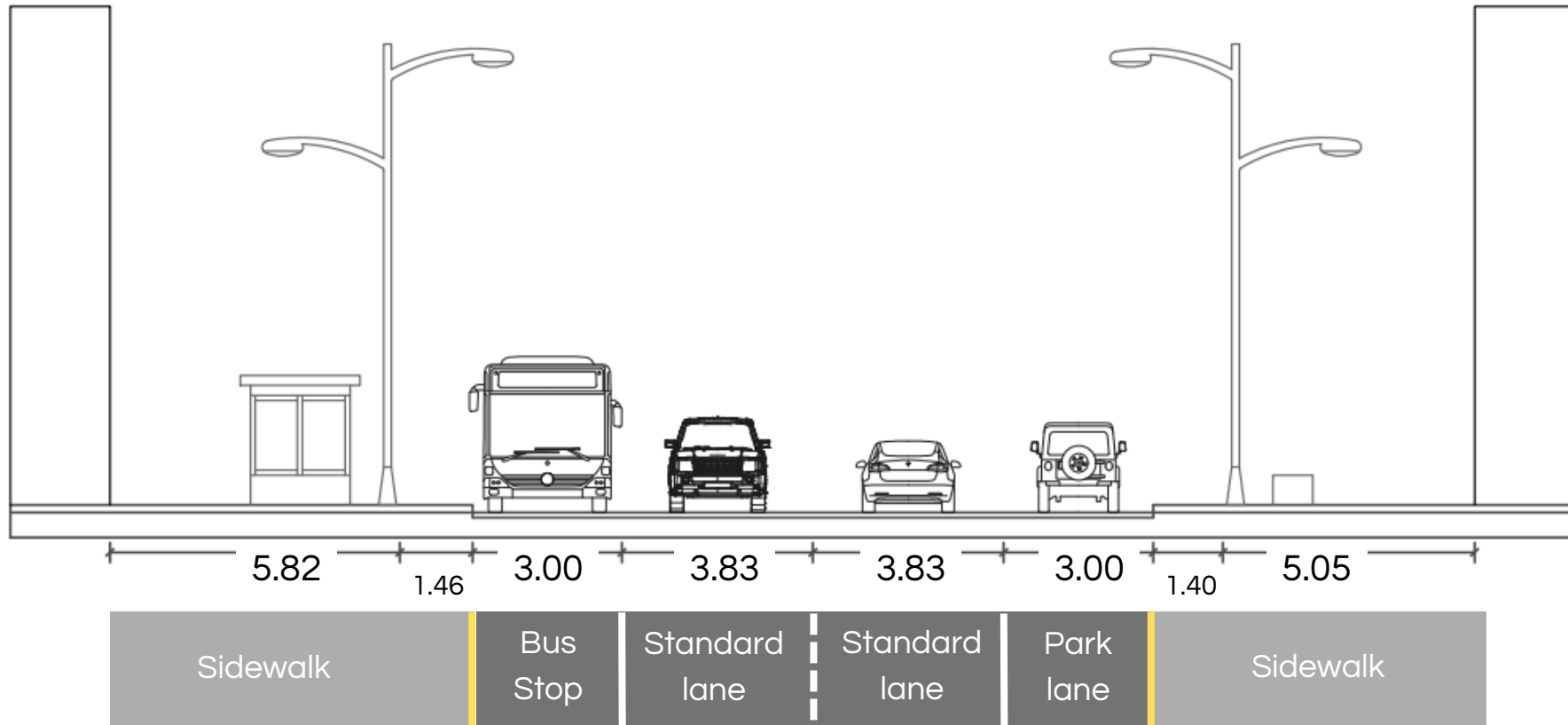
Idealization of a complete street concept.



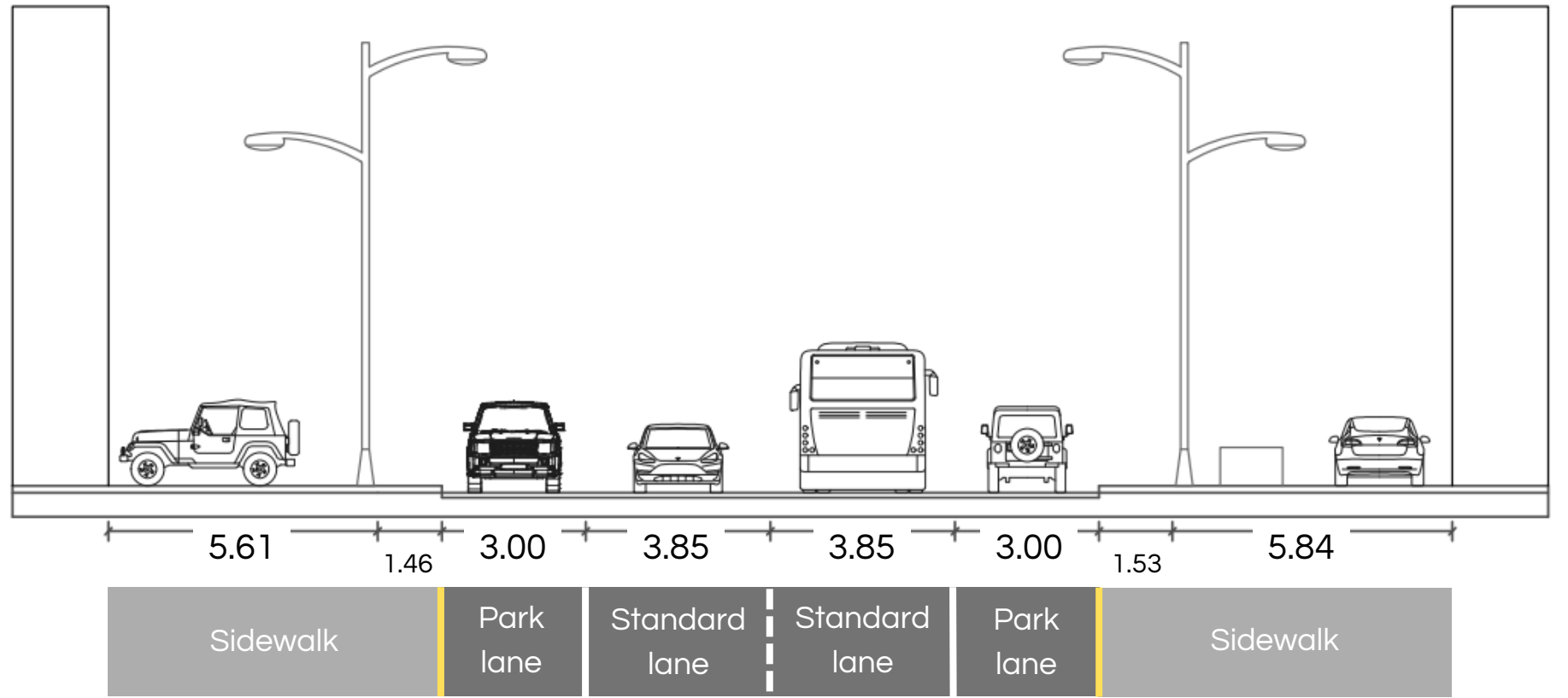
Design Strategies

Street profiles

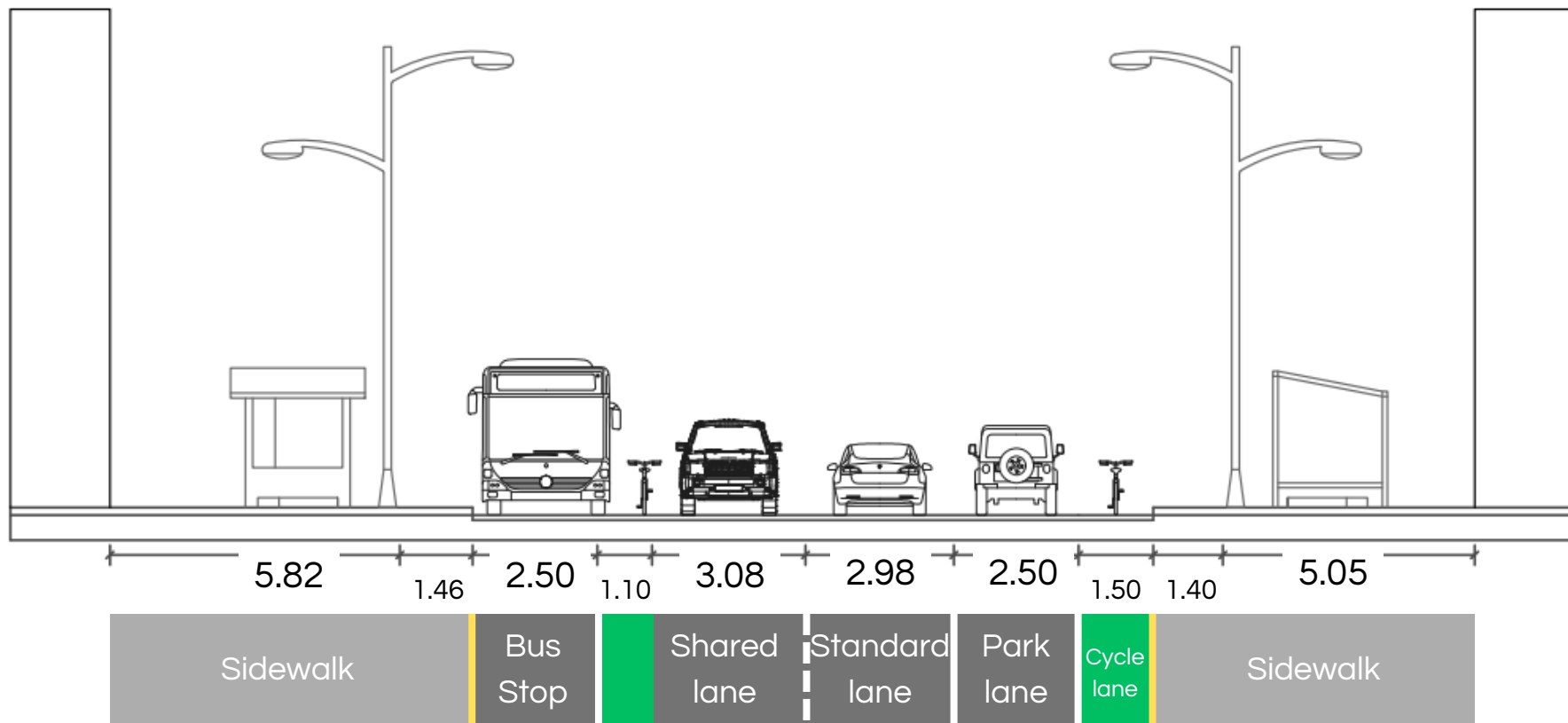
BEFORE (A)



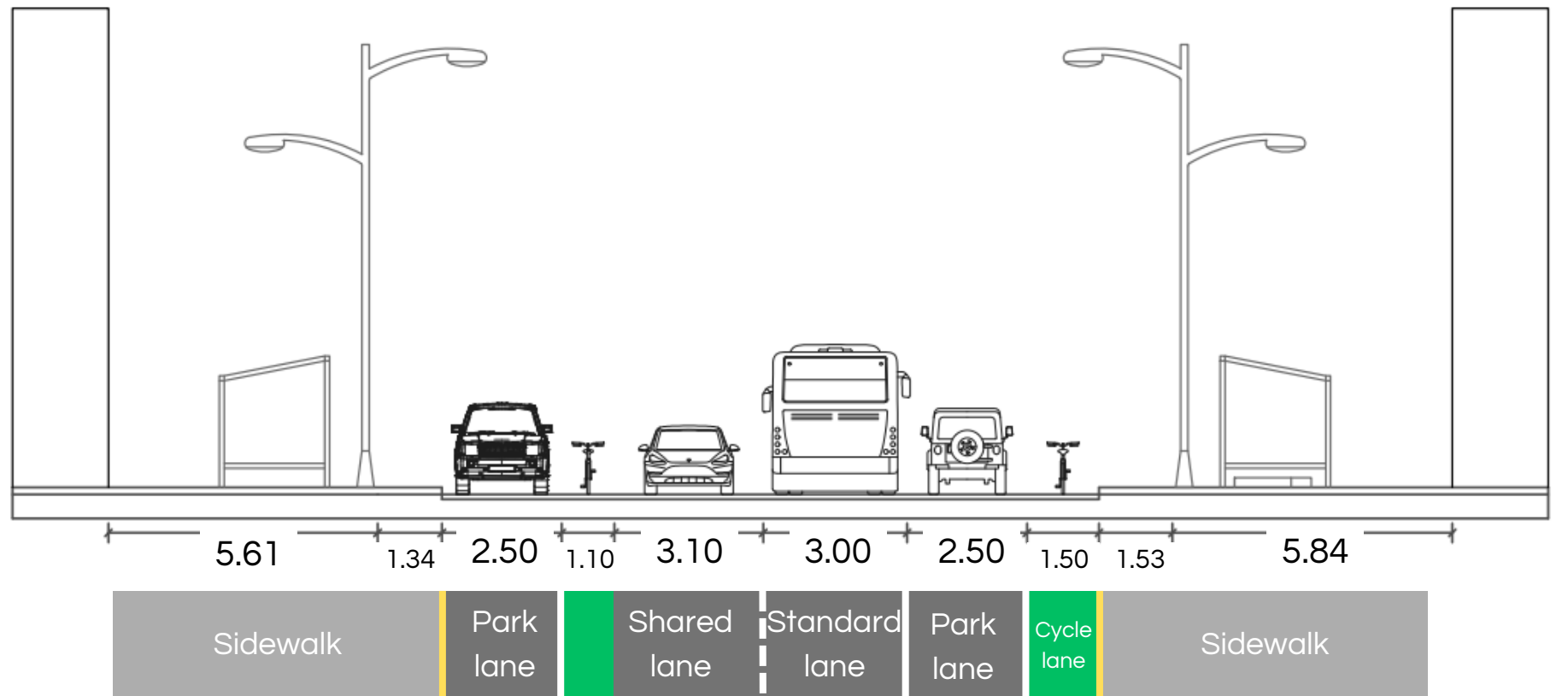
BEFORE (B)



AFTER (A)



AFTER (B)



How we start?

Tactical Urban Planning



In addition, adding vegetation through pots to cushion the heat island effect on the sidewalk flower pots on the street.

We can start by painting crosswalks in a creative way, expanding the sidewalk with flower pots on the street.

Also, we propose delimiting the cycling lane to see if it is viable.

