



# 2023

## WALKING TOGETHER

### CURITIBA TACTILE STREET

### INTERNATIONAL PROJECT

*R. Sen. Alencar Guimarães Center of Curitiba, Brazil*



# PROJECT LOCATION

## CURITIBA BRAZIL



BRAZIL



PARANA



CURITIBA

## SOCIAL CONTEXT

### POPULATION DENSITY

1,773,718 people



51 %



49 %



23,9 %

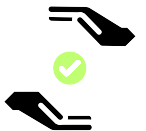
### ECONOMY



TOURISM

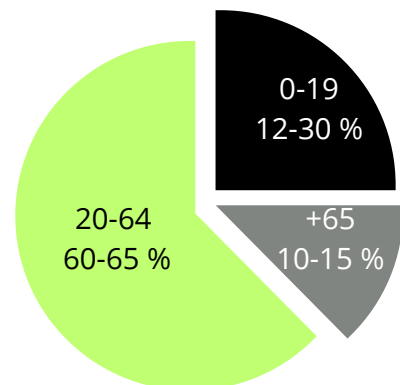


SERVICE

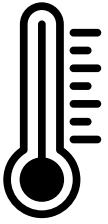


TRADE

### AGE RANGE



# CLIMATE CONTEXT



Maximum 27°C P/A

Minimum 10°C P/A



Maximum December 13 hrs 44min

Minimum June 10hrs 33min



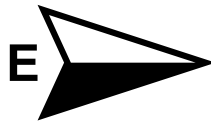
Maximum 70% - 205mm

Minimum 22% - 72mm



Maximum 39% February

Minimum 0% August



PREVAILING WINDS 6.8KM/H

## PROBLEMATIC

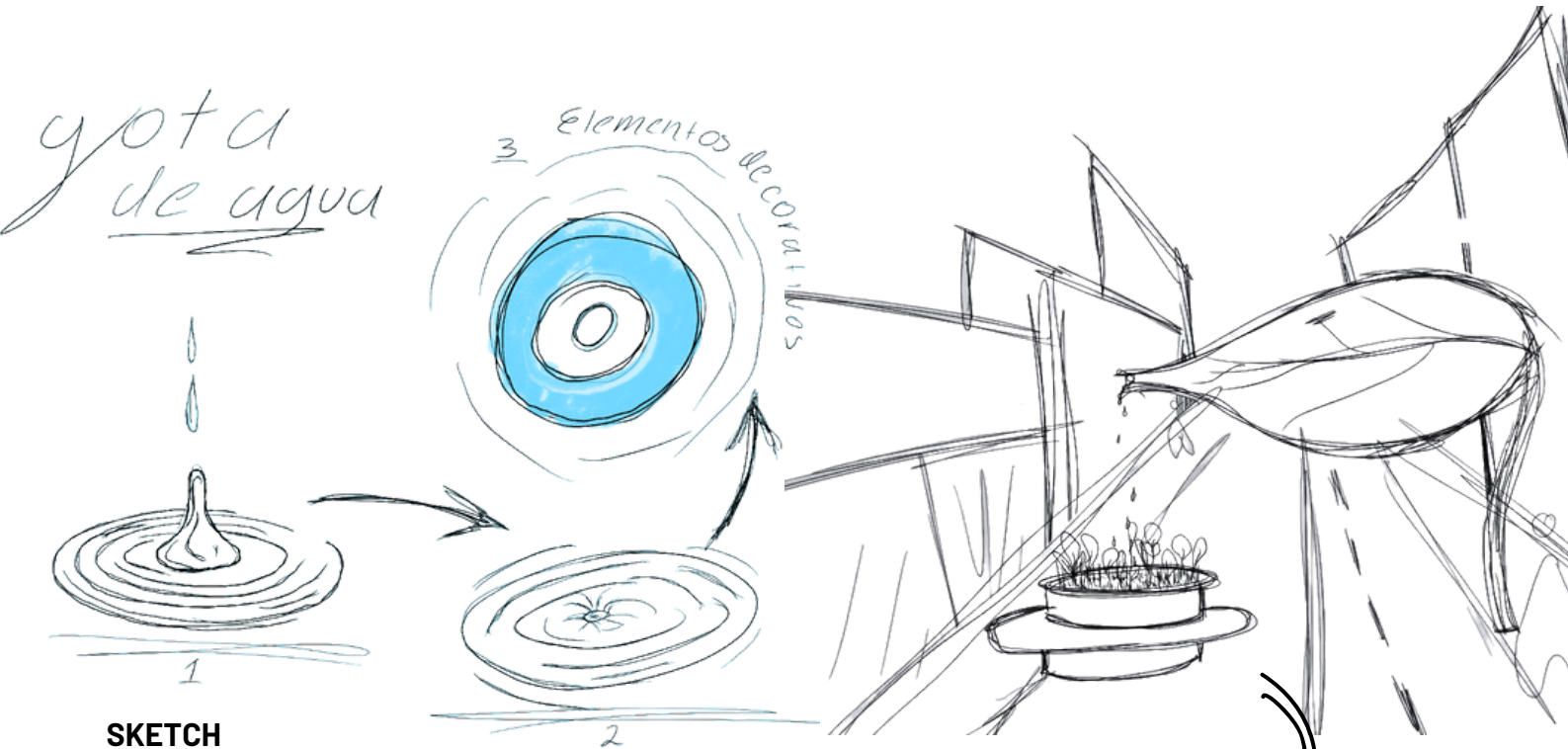
Curitiba, Brazil, faces recurring flooding due to its humid climate. This poses a constant threat to residents, infrastructure, and quality of life. The issue is worsened by ineffective stormwater management and inadequate drainage. Prioritizing sustainable solutions is crucial for the city's resilience and its residents' well-being.





# CONCEPT

In an ever-changing world, a unique initiative combines architecture and art in motion, in order to emphasize the importance of water. This immersive environment features buildings and sculptures harmonizing with nature, creating a vibrant cityscape. Along the way, visitors encounter messages highlighting water scarcity and receive practical tips for daily water conservation.



## SKETCH

In addition, local flooding issues are addressed with water harvesting by

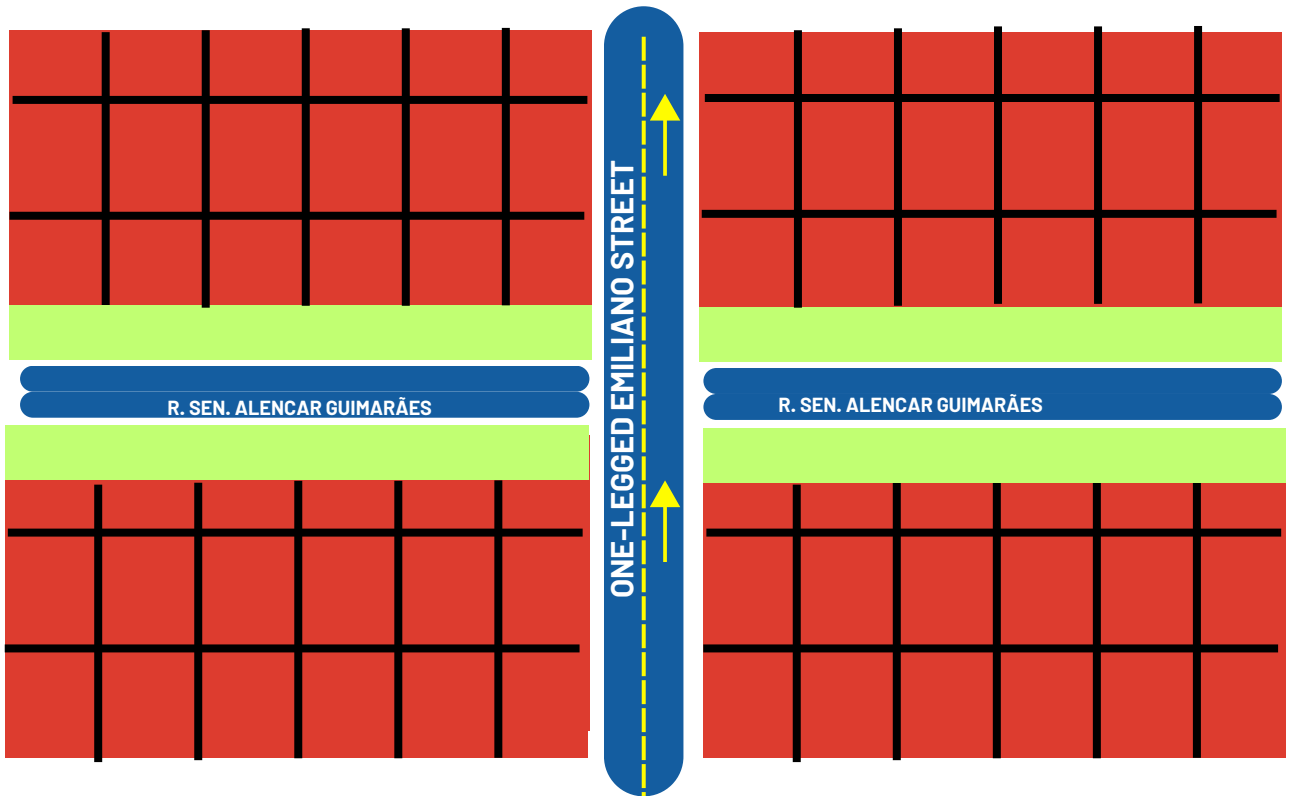
## JUSTIFICATION



Leaf-shaped parasols in the project offer aesthetic beauty and functionality, providing shade to pedestrians and promoting the city's connection with nature. In addition, local flooding issues are addressed with water harvesting by collecting rainwater for plant irrigation. This sustainable approach enhances environmental awareness and efficiently solves area-specific problems, showcasing the synergy between nature and functionality in Curitiba's urban landscape.

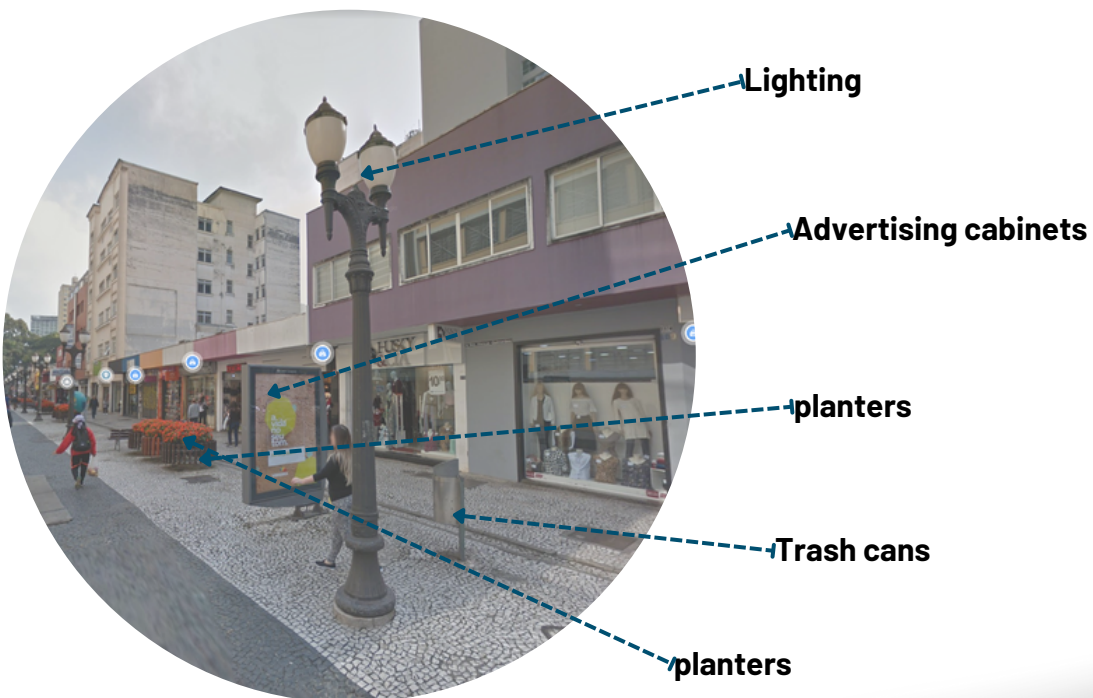


# ZONIFICATION



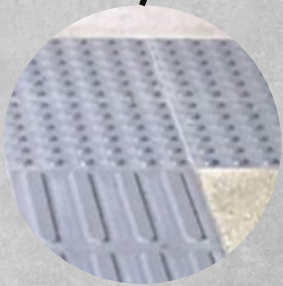
- PRIVATE AREA
- SERVICE AREA
- PUBLIC AREA

# URBAN FURNITURE



# MATERIALS

## STREET TO INTERVENE



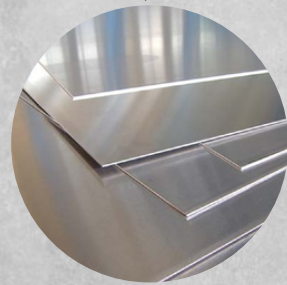
**NYLON PODOTACTILE  
PANELS**



**HIGH RESISTANCE  
EXTERIOR PAINT**



**WATER RESISTANT  
EBONY WOOD**



**ALUMINUM SHEETS**



# VEGETABLE PALLETE



## **CALLISIA (NATIVE)**

Callisia is a small, but charming hanging or covering plant (depending on where it is grown). Although its succulent, heart-shaped, soft-touch leaves are evergreen, they are also very weak.



## **SALVIA ROJA (NATIVE)**

Red sage is a must-have: its deep red tubular flowers, which grow atop long spikes, last up to five months and are perfect for garden beds, flower pots and balconies.



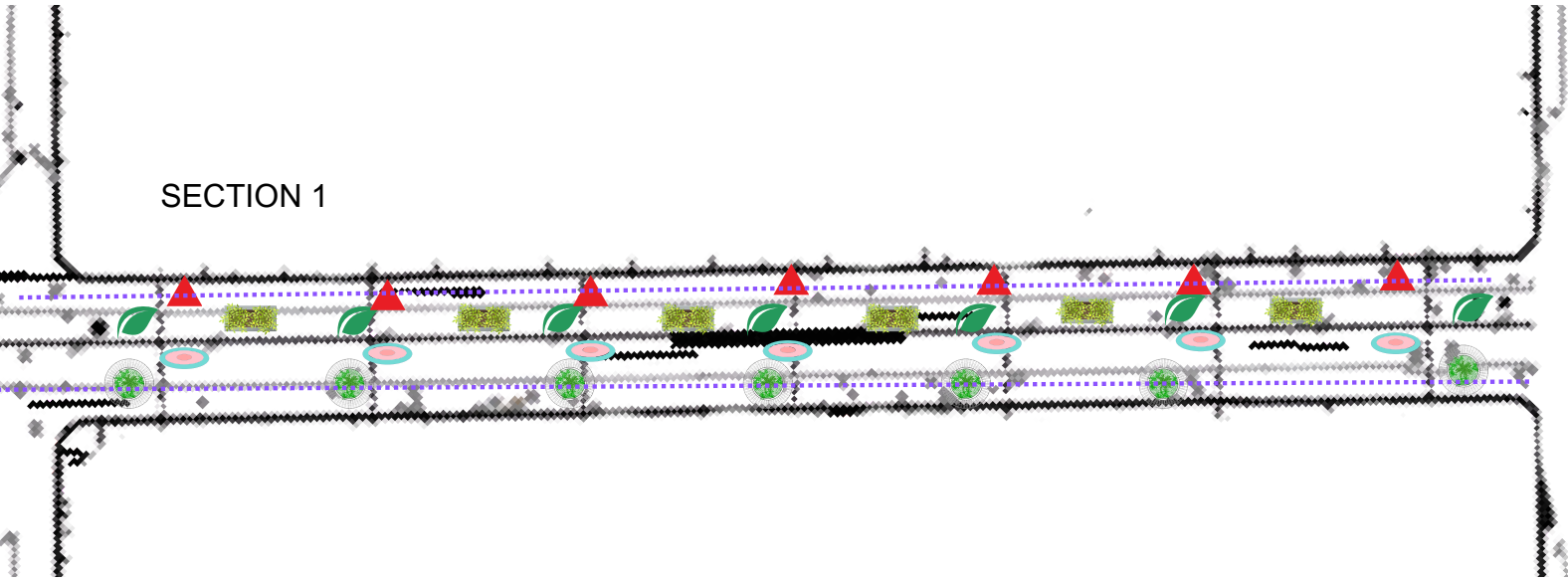
## **JOYAS DE OPAR (NATIVE)**

Valued for its decorative ability, opar jewels (*Talinum paniculatum*) are fast growing (almost invasive) and have a long history in Brazilian and Asian traditions.

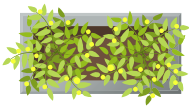
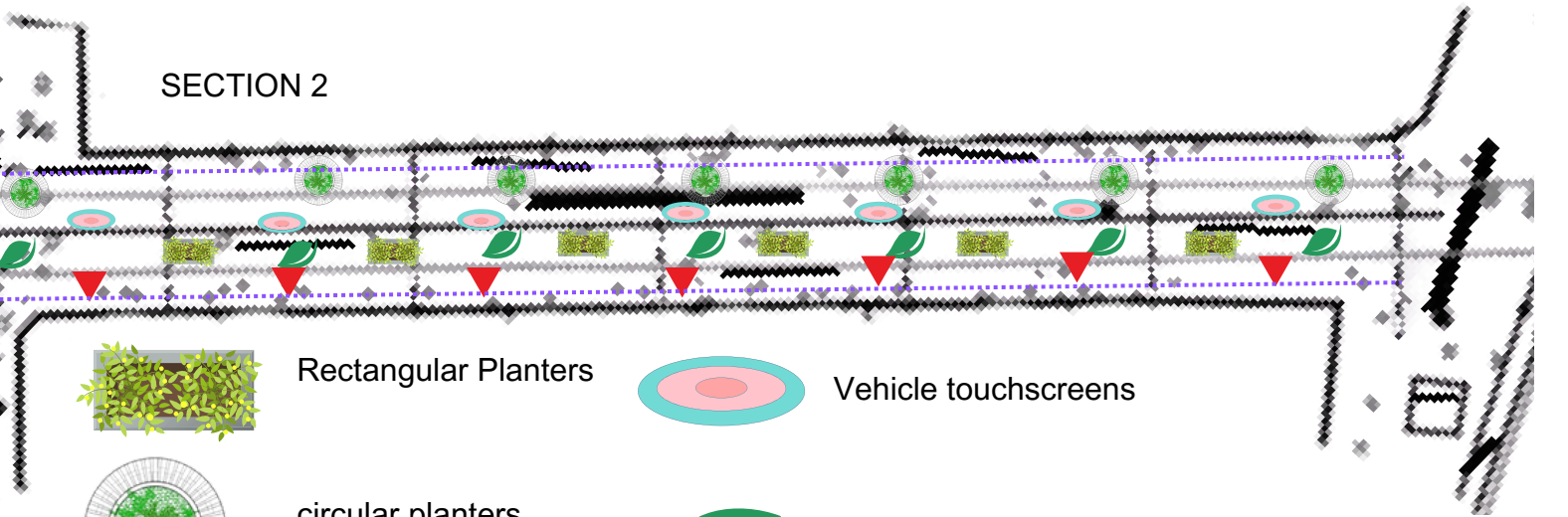


# URBAN MOBILIARY

SECTION 1



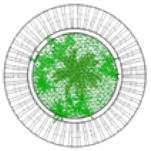
SECTION 2



Rectangular Planters



Vehicle touchscreens



circular planters



Parasols



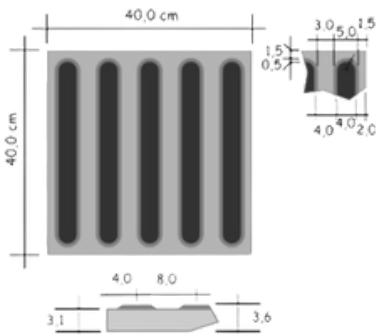
Pedestrian touch



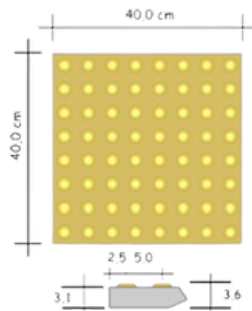
Podotactiles Type 1



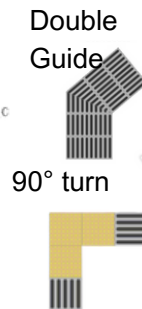
Podotactiles Type 2



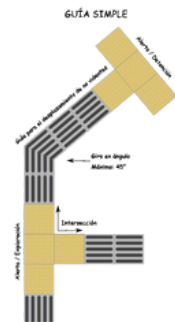
Podotactil Type 1  
Safe progress signal.



Podotactile Type 2  
Warning sign → stop - caution.



Double Guide  
90° turn



# COLOR PALETTE



Serenity



Quality

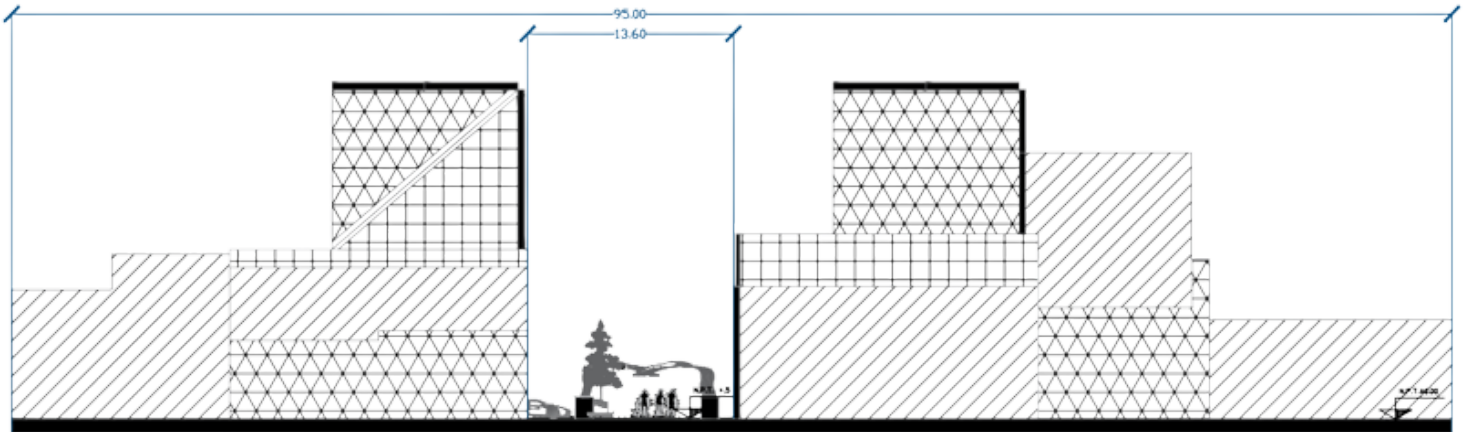


Happiness



Creativity

# ARCHITECTURAL CUTS



Cross Section A-A'

300 m



Longitudinal Section B-B'



# PROPOSAL

