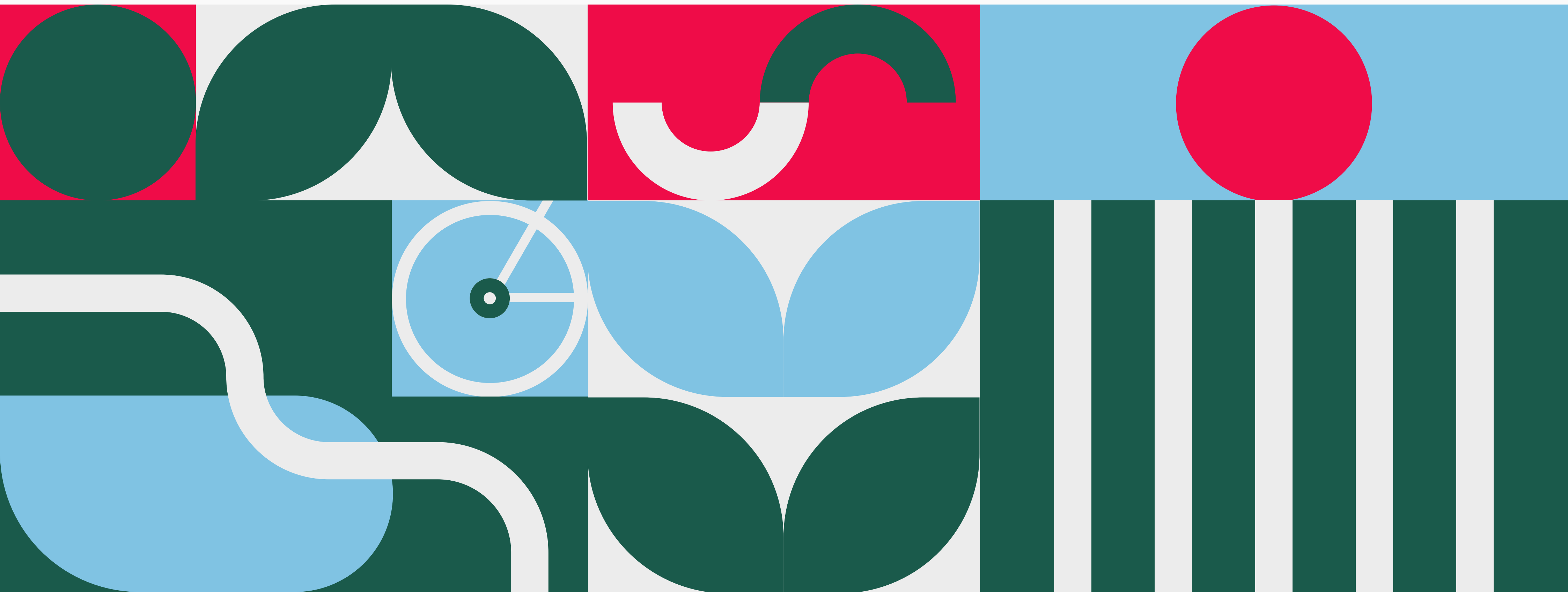


# JARDIN DE L'EST

Canada - Montréal

Jean-Talon East Concept Street



# Community profile

## Ethnic profile

The majority of this community comprises first and second-generation immigrants hailing from diverse regions such as **Algeria** (23%), **Italy** (17%), **Morocco** (13%), and **Haiti** (8%)

Highlighting the significance of promoting interactions among families of varying ethnic backgrounds within the area.

## Non-immigrants

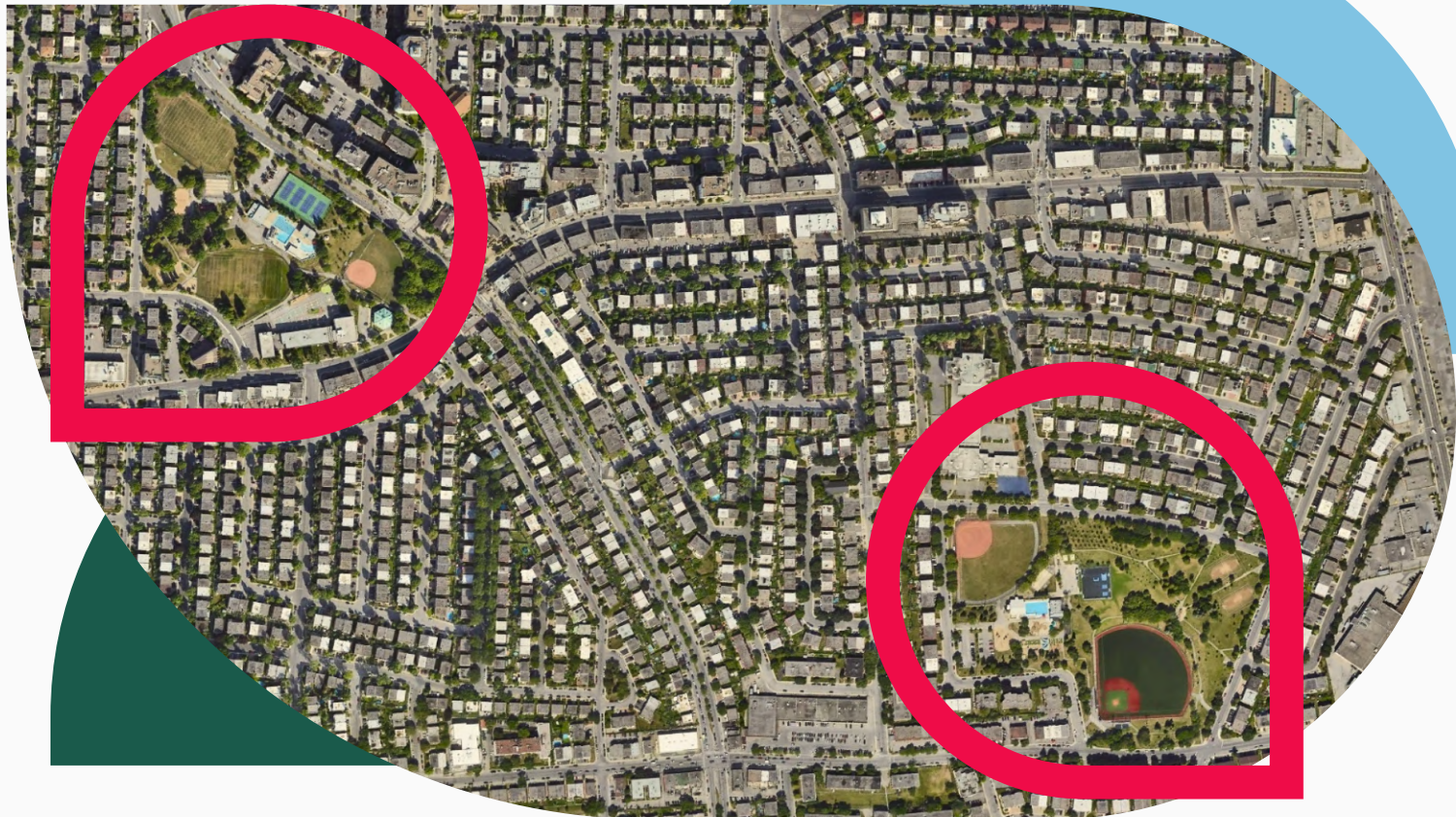
Additionally, it's crucial not to overlook the significance of preserving and respecting the culture of the native people. This cultural heritage should thrive alongside the cultural diversity of the community.

## Population by age

The majority and the goal audience of the project ranges from **0 to 5 years old** and **30 to 55 years old**.

This means the importance of safer and more open environments to benefit children, which includes measures such as reducing car speeds and expanding sidewalks. Simultaneously, it's essential to create spaces that foster the development of families and adults as well.





## Public interest parks

The street is situated between two vast green areas in the region. This presents an opportunity to create an accessible area in between, which can not only integrate the parks but also provide a healthy space for anyone to enjoy.

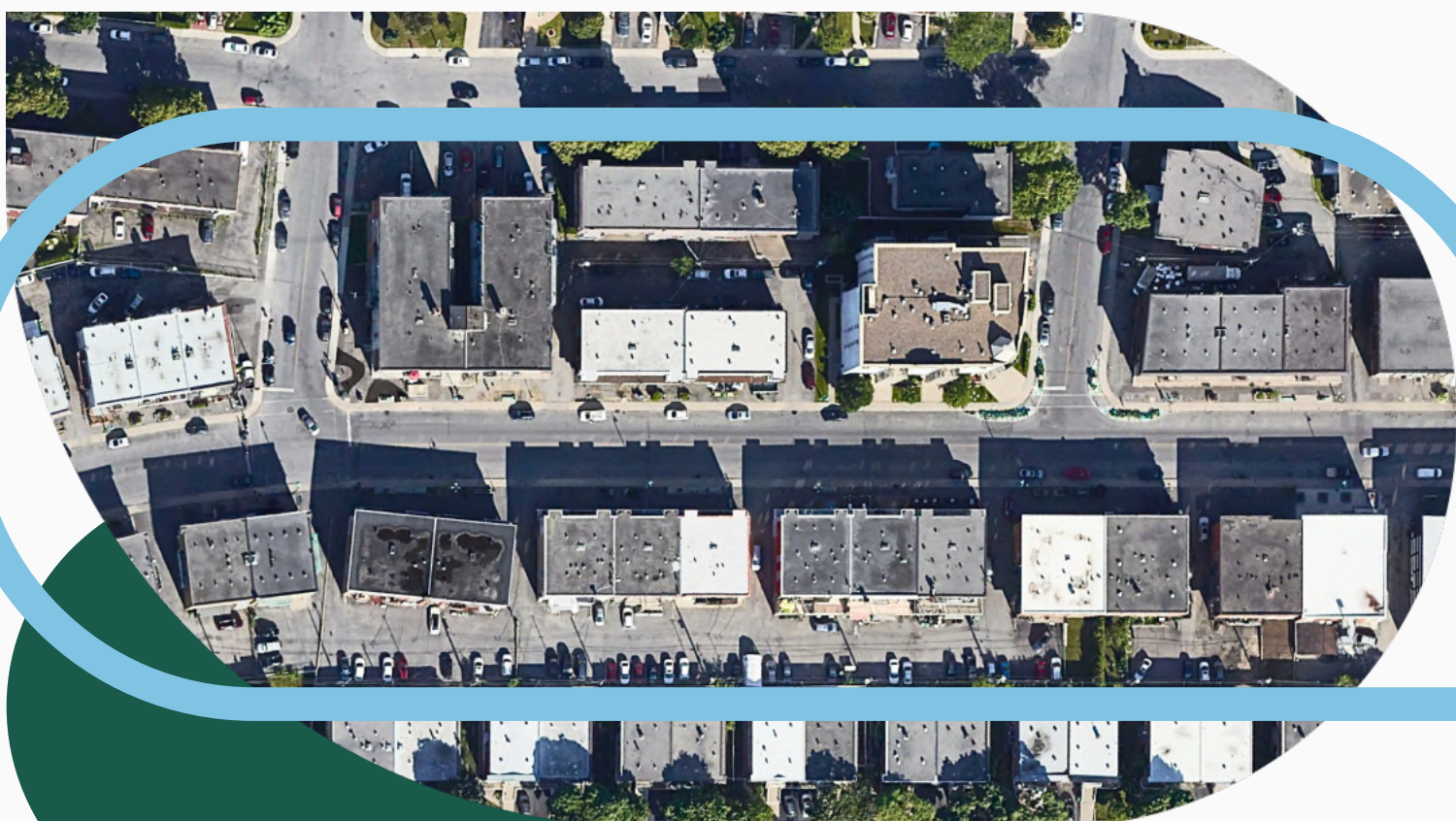
## Development area

A developing neighborhood with a future metro implementation already planned for the coming years along Jean-Talon Street, which will have approximately 5 or 6 stations spread out.



## Key point

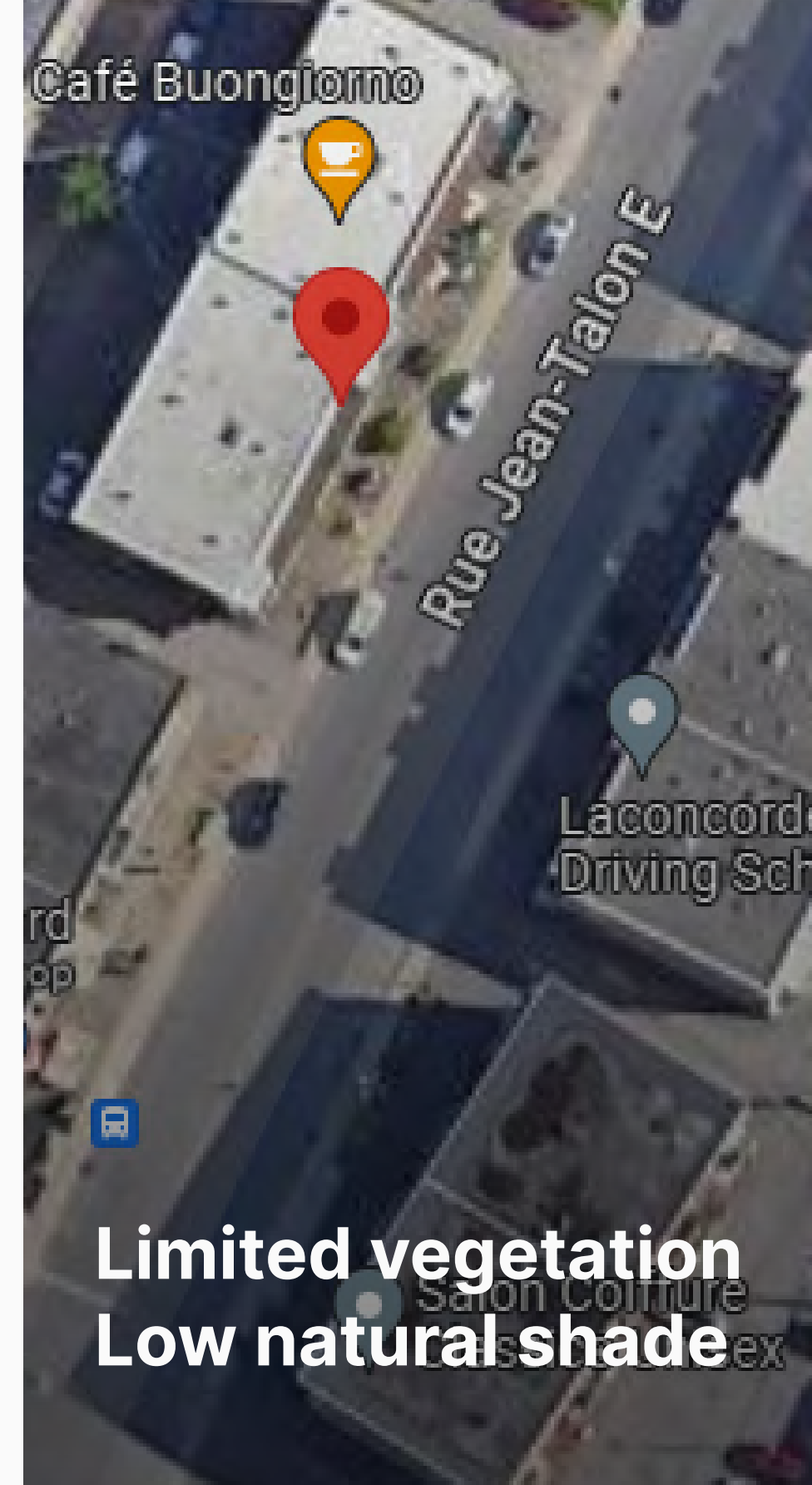
This case study is an 86m stretch of Jean-Talon East Street, an ideal point to showcase the potential and capacity of the Saint-Léonard Borough neighborhood to become better spaces for living and greater representation of the community that builds it.







Soil impermeability



Limited vegetation  
Low natural shade



Car-centric  
mobility



Lack of community  
intervention

## Problems addressed

Jean-Talon East faces issues, including soil impermeability due to extensive asphalt and contract-based paving. The absence of natural shade, a focus on car-centric mobility, and limited vegetation accentuate **the heat absorption and concentration**. The lack of community intervention represents a loss for the neighbourhood, emphasizing the need **to come together and take ownership** and change this reality through socialization and the representation of its culture





## Project concept goal

The small segment of Jean-Talon East Concept Street aims to symbolize **change over time in the three spheres: The operational strategy, the community involved and the city in question** . In the tactile architecture strategy, it implements streamlined solutions that can be replaced and improved with community involvement. **As the community grows together with the plants**, it fosters a sense of responsibility among those who will grow or desire a better place for future generations, one that is safer and more spacious. **In its development within the city**, it becomes a model stretch in the imagination of a more accessible urbanism, represented by its residents, and prepared for city changes such as the installation of new mobility modules.

The name carries the name and model of three different structures: **The spices garden, hanging gardens and raining gardens**.



# Timeline

As mentioned, the project takes into account **both short-term** and **long-term considerations**, featuring components that provide immediate benefits to the community, as well as elements that will evolve over the years as this infrastructure adapts to **community or plants growth and integration**.

## Months

In the initial phase, the streets are narrowed with paintings and sinalization, preliminary structures and plant seedlings are added. Additionally, community activities are encouraged to enhance the space.



## Years

The community has already taken ownership of the street, promoting not only culture through the appropriation of the space with wall paintings and events but also, sharing maintenance of the species that have grown. This frees the way for greater investments in raising the street level, transforming it into a shared space.







## Bike Rack

Providing an alternative to removed car spaces, these more compact units can **attract more people to the street and customers to local businesses.** They can be installed on the ground or on the walls of the area with the **addition of a hook.**

The formal structure represents the symbol of the city of Montreal

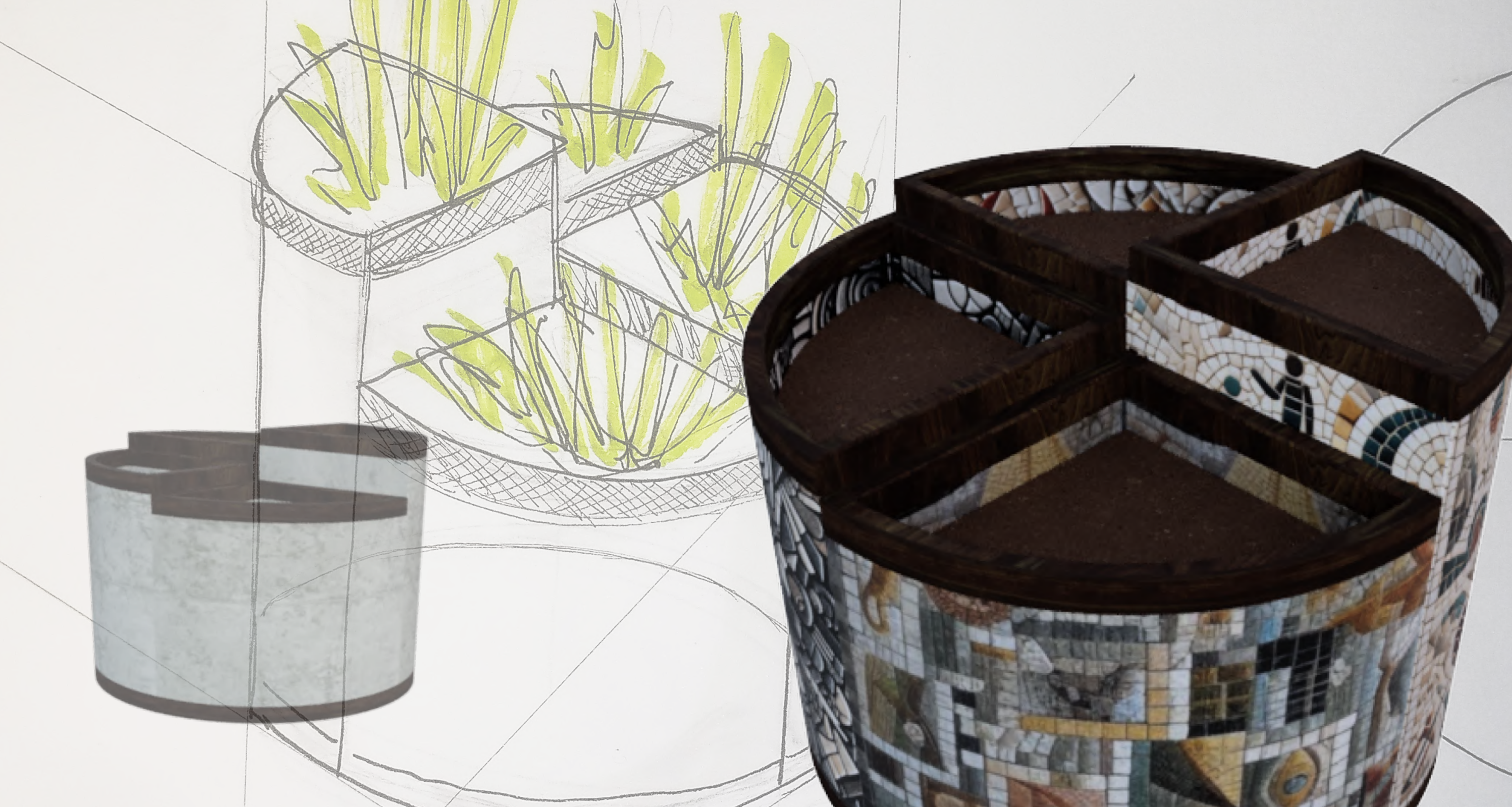
## Bench and tables

These pieces aim to bring more human presence to the street, **with two pieces that can be moved and connected in different ways**, this furniture will bring more life to Jean-Talon. The circular design seeks to bring them together to be stored around trees, but always being mobile enough to adapt to users' daily needs.

The adaptive design and curved lines also represents the curve of the street.





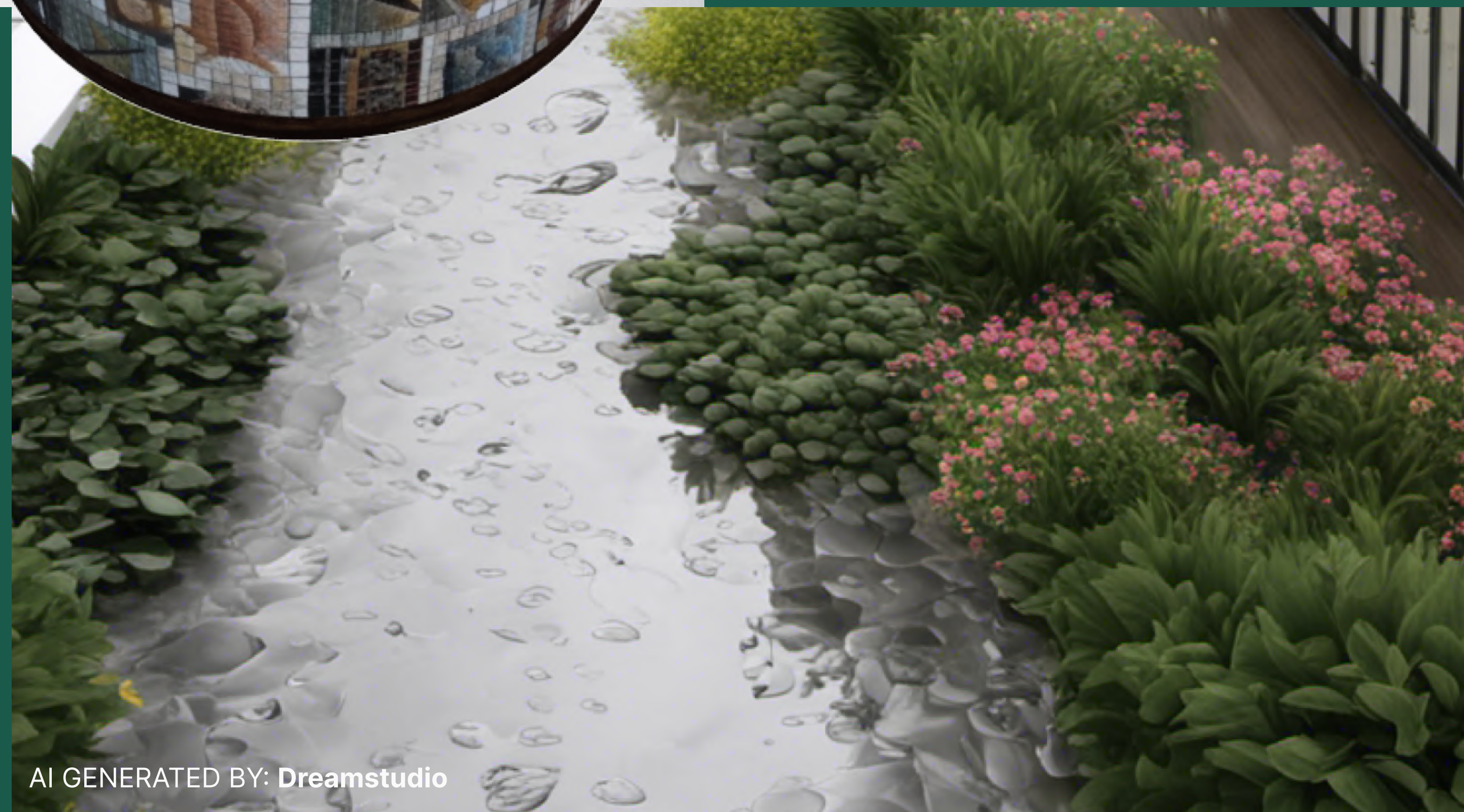


## Spices garden

With the goal of celebrating the cultures found in the region, the plants bed was designed for planting spices from countries that represent a segment of the local population. The furniture, divided into four sections, is meant for community involvement through art, such as **mosaic puzzles that could reflect their cultures**, the four spaces represent and unite the four distinct nationalities.

## Rain garden

A responsive solution module that embraces nature and water management in a modern and optimized space, where flower bushes grow in a humid environment **with water circulating and captured from the rain.**







## Living Willow Structure + Light Post

Part of the tactical urbanism, this is a temporary tree; its purpose is simple – **to bring more greenery, shade, and safety to the street.** Its metal structure will provide a base for willow plants, while in its center, a tree will grow, providing permanent shade and greenery. It will also serve as a support for street lighting at night.

## Hanging gardens

Searching for a solution separate the sidewalk from the street and increase shading, this simple piece aims to provide structure for creeping plants that will bring more life and improved air quality to the street. The structure can also be used to cover the bus stop.

The small curves of the structure **simulate the curve of the street next to the study section**, representing the continuity of the possible implementation.





# Expected outcomes

In the context of future studies and assumptions based on data and community behavior, the expected outcomes are primarily focused on **reducing heat concentration** in the region, as well as **decreasing its emissions**. Together and represented, these efforts create a space of shared care, where alongside nature, **the community also grows and finds a common path**.

